

Color Controller E-750

USER SOFTWARE INSTALLATION GUIDE

About the Documentation

This manual is part of a set of the supplier E-750 documentation that includes the following manuals for users and system administrators:

- The *Quick Start Guide* summarizes the steps for configuring the supplier E-750 and printing. It also describes how to access the online documentation.
- The *User Software Installation Guide* describes how to install software from the User Software CD to enable users to print to the supplier E-750, and also describes setting up printing connections to the supplier E-750.
- The *Configuration Guide* explains basic configuration and administration of the supplier E-750 for the supported platforms and network environments. It also includes guidelines for setting up UNIX, Windows NT 4.0/2000, and Novell NetWare servers to provide printing services to users.
- The *Printing Guide* describes the printing features of the supplier E-750 for users who send jobs from their computers.
- The *Color Guide* provides information on managing the color output of the supplier E-750. It explains how to calibrate your supplier E-750 and take advantage of the ColorWise® color management system, as well as features in ColorWise Pro Tools™.
- The *Fiery Color Reference* addresses concepts and issues associated with managing color output of the supplier E-750 and outlines key workflow scenarios. In addition, it offers information on printing color documents from popular Microsoft Windows and Apple Mac OS applications.
- The *Job Management Guide* explains the functions of the job management utilities, including Command WorkStation™ and DocBuilder Pro™, and how you can use them to monitor and control jobs on the supplier E-750. This manual is intended for an operator or administrator, or a user with the necessary access privileges, who monitors and manages job flow, performs color calibration, and troubleshoots problems that may arise.
- *Release Notes* provide last-minute product information and workarounds for some of the problems you may encounter.

Copyright © 2004 Electronics for Imaging, Inc. All rights reserved.

This publication is protected by copyright, and all rights are reserved. No part of it may be reproduced or transmitted in any form or by any means for any purpose without express prior written consent from Electronics for Imaging, Inc. Information in this document is subject to change without notice and does not represent a commitment on the part of Electronics for Imaging, Inc.

This publication is provided in conjunction with an EFI product (the "Product") which contains EFI software (the "Software"). The Software is furnished under license and may only be used or copied in accordance with the terms of the Software license set forth below.

The Product may be covered by one or more of the following U.S. Patents: 4,917,488, 4,941,038, 5,109,241, 5,150,454, 5,150,454, 5,170,182, 5,212,546, 5,278,599, 5,335,040, 5,343,311, 5,424,754, 5,467,446, 5,506,946, 5,517,334, 5,537,516, 5,543,940, 5,553,200, 5,565,960, 5,615,314, 5,619,624, 5,625,712, 5,640,228, 5,666,436, 5,760,913, 5,818,645, 5,835,788, 5,866,856, 5,867,179, 5,959,867, 5,970,174, 5,995,724, 6,002,795, 6,025,922, 6,041,200, 6,046,420, 6,065,041, 6,067,080, 6,112,665, 6,116,707, 6,118,205, 6,122,407, 6,134,018, 6,141,120, 6,151,014, 6,166,821, 6,184,873, 6,185,335, 6,201,614, 6,215,562, 6,219,659, 6,222,641, 6,224,048, 6,225,974, 6,226,419, 6,239,895, 6,256,108, 6,265,676, 6,266,051, 6,269,190, 6,289,122, 6,292,177, 6,292,270, 6,300,580, 6,310,697, 6,323,893, 6,326,565, 6,327,047, 6,327,050, 6,327,052, 6,330,071, 6,331,899, 6,335,723, 6,340,975, 6,341,017, 6,341,018, 6,341,307, 6,348,978, 6,356,359, 6,369,895, 6,373,003, 6,381,036, 6,400,443, 6,414,673, 6,424,340, 6,429,949, 6,449,393, 6,456,280, 6,476,927, 6,490,696, 6,501,461, 6,501,565, 6,519,053, D341,131, D406,117, D416,550, D417,864, D419,185, D426,206, D430,206, D439,851, D444,793, RE33,973, RE36,947

Trademarks

Bestcolor, ColorWise, EDOX, EFI, Fiery, the Fiery logo, Fiery Driven, RIP-While-Print and Spot-On are registered trademarks of Electronics For Imaging, Inc. in the U.S. Patent and Trademark Office and/or certain other foreign jurisdictions.

The Best logo, the Electronics For Imaging logo, the Fiery Driven logo, the Intelligent Device Management logo, the PrintMe logo, the Splash logo, the Unimobile logo, the Velocity OneFlow logo, Everywhere You Go, Changing the Way the World Prints, AutoCal, AutoGray, Best, ColorCal, Command WorkStation, Device IQ, DocBuilder, DocBuilder Pro, DocStream, FreeForm, Fiery Link, Fiery Prints, Fiery Spark, Intelligent Device Management, NetWise, PrintMe, PrintMe Enterprise, PrintMe Networks, RIPChips, ScanBuilder, SendMe, Splash, Unimobile, Velocity, Velocity Balance, Velocity Build, Velocity Estimate, Velocity Exchange, Velocity OneFlow, Velocity Scan, VisualCal, WebInstaller, WebScan, WebSpooler, WebStatus, and WebTools are trademarks of Electronics For Imaging, Inc.

All other terms and product names may be trademarks or registered trademarks of their respective owners, and are hereby acknowledged.

Legal Notices

APPLE COMPUTER, INC. ("APPLE") MAKES NO WARRANTIES, EXPRESS OR IMPLIED, INCLUDING WITHOUT LIMITATION THE IMPLIED WARRANTIES OF MERCHANTABILITY AND FITNESS FOR A PARTICULAR PURPOSE, REGARDING THE APPLE SOFTWARE. APPLE DOES NOT WARRANT, GUARANTEE, OR MAKE ANY REPRESENTATIONS REGARDING THE USE OR THE RESULTS OF THE USE OF THE APPLE SOFTWARE IN TERMS OF ITS CORRECTNESS, ACCURACY, RELIABILITY, CURRENTNESS, OR OTHERWISE. THE ENTIRE RISK AS TO THE RESULTS AND PERFORMANCE OF THE APPLE SOFTWARE IS ASSUMED BY YOU. THE EXCLUSION OF IMPLIED WARRANTIES IS NOT PERMITTED BY SOME STATES. THE ABOVE EXCLUSION MAY NOT APPLY TO YOU.

IN NO EVENT WILL APPLE, ITS DIRECTORS, OFFICERS, EMPLOYEES OR AGENTS BE LIABLE TO YOU FOR ANY CONSEQUENTIAL, INCIDENTAL OR INDIRECT DAMAGES (INCLUDING DAMAGES FOR LOSS OF BUSINESS PROFITS, BUSINESS INTERRUPTION, LOSS OF BUSINESS INFORMATION, AND THE LIKE) ARISING OUT OF THE USE OR INABILITY TO USE THE APPLE SOFTWARE EVEN IF APPLE HAS BEEN ADVISED OF THE POSSIBILITY OF SUCH DAMAGES. BECAUSE SOME STATES DO NOT ALLOW THE EXCLUSION OR LIMITATION OF LIABILITY FOR CONSEQUENTIAL OR INCIDENTAL DAMAGES, THE ABOVE LIMITATIONS MAY NOT APPLY TO YOU. Apple's liability to you for actual damages from any cause whatsoever, and regardless of the form of the action (whether in contract, tort [including negligence], product liability or otherwise), will be limited to \$50.

PANTONE® Colors displayed in the software application or in the user documentation may not match PANTONE-identified standards.† Consult current PANTONE Color Publications for accurate color. PANTONE® and other Pantone, Inc. trademarks are the property of Pantone, Inc.† © Pantone, Inc., 2003.

Pantone, Inc. is the copyright owner of color data and/or software which are licensed to Electronics for Imaging, Inc.,†to distribute for use only in combination with the products, or software of Electronics for Imaging, Inc. †PANTONE Color Data and/or Software shall not be copied onto another disk or into memory except as part of the delivery of the Electronics for Imaging, Inc., products or software.

This product includes software developed by the Apache Software Foundation (<http://www.apache.org/>).

FCC Information

WARNING: FCC Regulations state that any unauthorized changes or modifications to this equipment not expressly approved by the manufacturer could void the user's authority to operate this equipment.

Class A Compliance

This equipment has been tested and found to comply with the limits for a Class A digital device, pursuant to Part 15 of the FCC Rules. These limits are designed to provide reasonable protection against harmful interference when the equipment is operated in a commercial environment. This equipment generates, and uses, and can radiate radio frequency energy and, if not installed and used in accordance with the instruction manual, may cause harmful interference to radio communications. Operation of this equipment in a residential area is likely to cause interference in which case the user will be required to correct the interference at his own expense.

Industry Canada Class A Notice

This Class A digital apparatus complies with Canadian ICES-003.

Avis de Conformation Classe A de l'Industrie Canada

Cet appareil numérique de la Classe A est conforme à la norme NMB-003 du Canada.

RFI Compliance Notice

This equipment has been tested concerning compliance with the relevant RFI protection requirements both individually and on system level (to simulate normal operation conditions). However, it is possible that these RFI Requirements are not met under certain unfavorable conditions in other installations. It is the user who is responsible for compliance of his particular installation.

Dieses Gerät wurde sowohl einzeln als auch in einer Anlage, die einen normalen Anwendungsfall nachbildet, auf die Einhaltung der Funkstörbestimmungen geprüft. Es ist jedoch möglich, dass die Funkstörbestimmungen unter ungünstigen Umständen bei anderen Gerätekombinationen nicht eingehalten werden. Für die Einhaltung der Funkstörbestimmungen einer gesamten Anlage, in der dieses Gerät betrieben wird, ist der Betreiber verantwortlich.

Compliance with applicable regulations depends on the use of shielded cables. It is the user who is responsible for procuring the appropriate cables.

Die Einhaltung zutreffender Bestimmungen hängt davon ab, dass geschirmte Ausführungen benutzt werden. Für die Beschaffung richtiger Ausführungen ist der Betreiber verantwortlich.

Software License Agreement

YOU SHOULD CAREFULLY READ THE FOLLOWING TERMS AND CONDITIONS BEFORE USING THIS SOFTWARE. IF YOU DO NOT AGREE TO THE TERMS AND CONDITIONS OF THIS AGREEMENT, DO NOT USE THE SOFTWARE. INSTALLING OR USING THE SOFTWARE INDICATES THAT YOU AGREE TO AND ACCEPT THE TERMS OF THIS AGREEMENT. IF YOU DO NOT AGREE TO ACCEPT THE TERMS OF THIS AGREEMENT YOU MAY RETURN THE UNUSED SOFTWARE FOR A FULL REFUND TO THE PLACE OF PURCHASE.

License

EFI grants you a non-exclusive license to use the Software and accompanying documentation ("Documentation") included with the Product. The Software is licensed, not sold. You may use the Software solely for your own customary business or personal purposes. You may not rent, lease, sublicense or lend the Software or use the Software in any time sharing, service bureau, or similar arrangement.

You may not make or have made, or permit to be made, any copies of the Software or portions thereof, except one (1) copy for backup or archive purposes in support of your use of the Software as permitted hereunder. You may not copy the Documentation. You may not attempt to localize, translate, disassemble, decompile, decrypt, reverse engineer, discover the source code of, modify, create derivative works of, or in any way change any part of the Software.

The terms, conditions, and restrictions in the License Agreement apply to all bug fixes, patches, releases, release notes, updates, and upgrades related to the Software.

Proprietary Rights

You acknowledge and agree that all rights, title and interest, including all intellectual property rights, in and relating to the Software, Documentation and all modifications and derivative works thereof are solely owned by and shall remain with EFI and its suppliers. Except for the express limited license granted above to use the Software, no right or license of any kind is granted. You receive no rights or license under any patents, copyrights, trade secrets, or trademarks (whether registered or unregistered). You agree not to adopt, register, or attempt to register any EFI trademark or trade name ("EFI Mark") or any confusingly similar mark, URL, internet domain name, or symbol as your own name or the name of your affiliates or products, and not to take any other action which impairs or reduces the trademark rights of EFI or its suppliers.

Confidentiality

The Software is confidential, proprietary information of EFI and you may not distribute or disclose the Software. You may, however, permanently transfer all of your rights under this Agreement to another person or legal entity provided that: (1) such a transfer is authorized under all applicable export laws and regulations, including the U.S. Export Administration Regulations, (2) you transfer to the person or entity all of the Software and Documentation (including all copies, updates, upgrades, prior versions, component parts, the media and printed materials, and this Agreement); (3) you retain no copies of the Software and Documentation, including copies stored on a computer; and (4) the recipient agrees to the terms and conditions of this Agreement.

Remedies and Termination

Unauthorized use, copying, or disclosure of the Software, or any breach of this Agreement will result in automatic termination of this license and will make available to EFI other legal remedies. In the event of termination, you must destroy all copies of the Software, Documentation, and all component parts thereof. All provisions of this Agreement relating to disclaimers of warranties, limitation of liability, remedies, damages, governing law, jurisdiction, venue, and EFI's proprietary rights shall survive termination.

Limited Warranty and Disclaimer

EFI warrants to the original purchaser ("Customer") for thirty (30) days from the date of original purchase from EFI or its authorized retailer that the Software will perform in substantial conformance to the Documentation when the Product is used as authorized by EFI's specifications. EFI warrants the media containing the Software against failure during the above warranty period. EFI makes no warranty or representation that the Software will meet your specific requirements, that the operation of the Software will be uninterrupted, secure, fault-tolerant, or error free, or that all defects in the Software will be corrected. EFI makes no warranty, implied or otherwise, regarding the performance or reliability of any third party products (software or hardware). THE INSTALLATION OF ANY THIRD PARTY PRODUCTS OTHER THAN AS AUTHORIZED BY EFI WILL VOID THIS WARRANTY. IN ADDITION, USE, MODIFICATION, AND/OR REPAIR OF THE PRODUCT OTHER THAN AS AUTHORIZED BY EFI WILL VOID THIS WARRANTY.

EXCEPT FOR THE ABOVE EXPRESS LIMITED WARRANTY AND TO THE MAXIMUM EXTENT PERMITTED BY APPLICABLE LAW, EFI MAKES AND YOU RECEIVE NO WARRANTIES OR CONDITIONS ON THE SOFTWARE, EXPRESS, IMPLIED, STATUTORY, OR IN ANY OTHER PROVISION OF THIS AGREEMENT OR COMMUNICATION WITH YOU, AND EFI SPECIFICALLY DISCLAIMS ANY IMPLIED WARRANTY OR CONDITION OF MERCHANTABILITY OR FITNESS FOR A PARTICULAR PURPOSE OR NONINFRINGEMENT OF THIRD PARTY RIGHTS.

Limitation of Liability

TO THE MAXIMUM EXTENT PERMITTED BY LAW, EFI AND ITS SUPPLIERS SHALL NOT BE LIABLE FOR ANY DAMAGES, INCLUDING LOSS OF DATA, LOST PROFITS, COST OF COVER OR OTHER SPECIAL, INCIDENTAL, CONSEQUENTIAL OR INDIRECT DAMAGES ARISING FROM THE SALE, INSTALLATION, MAINTENANCE, USE, PERFORMANCE OR FAILURE OF THE SOFTWARE, HOWEVER CAUSED AND ON ANY THEORY OF LIABILITY. THIS LIMITATION WILL APPLY EVEN IF EFI HAS BEEN ADVISED OF THE POSSIBILITY OF SUCH DAMAGE. YOU ACKNOWLEDGE THAT THE PRICE OF THE PRODUCT REFLECTS THIS ALLOCATION OF RISK. BECAUSE SOME JURISDICTIONS DO NOT ALLOW THE EXCLUSION OR LIMITATION OF LIABILITY FOR CONSEQUENTIAL OR INCIDENTAL DAMAGES, THE ABOVE LIMITATION MAY NOT APPLY TO YOU.

You are hereby notified that Adobe Systems Incorporated, a Delaware corporation located at 345 Park Avenue, San Jose, CA 95110-2704 ("Adobe") is a third-party beneficiary to this agreement to the extent that this agreement contains provisions which relate to your use of any software, font programs, typefaces, and/or trademarks licensed or supplied by Adobe. Such provisions are made expressly for the benefit of Adobe and are enforceable by Adobe in addition to EFI. ADOBE WILL HAVE NO LIABILITY WHATSOEVER TO YOU FOR ANY ADOBE SOFTWARE OR TECHNOLOGY LICENSED HEREUNDER.

Export Controls

EFI's Products are subject to U.S. export laws and regulations, including the U.S. Export Administration Regulations, as well as foreign export laws and regulations. You agree that you will not use, distribute, transfer, export, or re-export any portion of the Product or the Software in any form in violation of any applicable laws or regulations of the United States or the country in which you obtained them.

U.S. Government Restricted Rights:

Use, duplication, or disclosure of the Software by the United States Government is subject to restrictions as set forth in FAR 12.212 or DFARS 227.7202-3 - 227.7202-4 and, to the extent required under U.S. federal law, the minimum restricted rights as set out in FAR 52.227-14, Restricted Rights Notice (June 1987) Alternate III(g)(3)(June 1987) or FAR 52.227-19 (June 1987). To the extent any technical data is provided pursuant to the Agreement, such data is protected per FAR 12.211 and DFARS 227.7102-2 and to the extent explicitly required by the U.S. Government, is subject to limited rights as set out in DFARS 252.227.7015 (November 1995) and DFARS 252.227-7037 (September 1999). In the event that any of the above referenced agency regulations are modified or superceded, the subsequent or equivalent regulation shall apply. The name of the Contractor is Electronics for Imaging.

General

The rights and obligations of the parties related to this Agreement will be governed in all respects by the laws of the State of California exclusively, as such laws apply to contracts between California residents performed entirely within California. The United Nations Convention on Contracts for the International Sale of Goods and any other similar convention does not apply to this Agreement. For all disputes related to this Agreement, you consent to the personal and exclusive jurisdiction and venue of the state courts in San Mateo County, California and the federal court for the Northern District of California. This Agreement is the entire agreement held between us and supersedes any other communications or advertising with respect to the Software. If any provision of this Agreement is held invalid, such provision shall be deemed modified to the extent necessary to be enforceable and the other provisions in this Agreement shall continue in full force and effect.

If you have any questions, please see EFI's web site at www.efi.com.

Electronics for Imaging
303 Velocity Way
Foster City, CA 94404

Contents

About the Documentation

Introduction

About this manual	xi
Specifications	xii
User software	xiii
Fiery WebTools	xvi
System requirements	xvi

Chapter 1: Installing User Software on a Windows Computer

Setting up PostScript or PCL printing with Windows 98/Me	1-1
Installing the PostScript or PCL printer driver for Windows 98/Me	1-2
Configuring installed options	1-3
Completing the Windows 98/Me printer connection	1-6
Setting up PostScript or PCL printing with Windows NT 4.0	1-13
Installing the PostScript or PCL printer driver for Windows NT 4.0	1-13
Configuring installed options	1-16
Completing the Windows NT 4.0 printer connection	1-21
Setting up PostScript or PCL printing with Windows 2000/XP/Server 2003	1-28
Installing the PostScript or PCL printer driver for Windows 2000/XP	1-28
Configuring installed options	1-32
Completing the Windows 2000/XP/Server 2003 printer connection	1-37
Uninstalling the Printer Drivers	1-47
Installing EFI Fiery Mail Port	1-47
Installing Fiery utilities	1-53
Adobe Acrobat	1-54
PitStop	1-55
Using Fiery utilities for the first time	1-56
Configuring the connection for Fiery utilities	1-58

Configuring the connection for Command WorkStation	1-60
Installing color files from the User Software CD	1-64
Installing the ICM profiles on a Windows computer	1-65
Loading the monitor settings file	1-65
Loading the ICM copier/printer device profile	1-67
Installing the printer description files for Windows	1-68

Chapter 2: Installing User Software on a Mac OS Computer

Setting up the E-750 as a PostScript printer	2-1
Setting up Mac OS 9.x printer drivers and printer description files	2-2
Setting up Mac OS X printer drivers and printer description files	2-4
Installing E-750 software and fonts	2-8
Installing MRJ on your computer	2-9
Configuring a connection for ColorWise Pro Tools	2-10
Configuring a connection for Fiery Spooler	2-12
Configuring a connection for Fiery Downloader	2-15
Configuring the connection for Command WorkStation LE for Mac OS X	2-16
Fonts	2-19
Installing color files from the User Software CD	2-20
Loading ICC profiles	2-21
Loading the monitor settings file	2-23
Loading the ICC copier/printer profile	2-24

Chapter 3: Downloading Installers with Fiery WebTools

Setting up Fiery WebTools	3-1
Using the Fiery WebTools Installer	3-2

Chapter 4: Troubleshooting

On a Windows computer	4-1
Setting up printing on Windows NT 4.0 or Windows 2000/XP/Server 2003 computers	4-1
Reinstalling the Adobe PostScript Printer Driver on Windows 98/Me	4-1

Problems with the Fiery utilities on Windows computers	4-2
On a Mac OS computer	4-2
Setting up the E-750 in the Mac OS 9 Chooser	4-2
Setting up the E-750 in the Mac OS X Print Center	4-3

Index

Introduction

This manual describes how to install user software for the supplier E-750, and how to set up printing from Microsoft Windows and Apple Mac OS computers. For information about setting up network servers and clients to use the supplier E-750, see the *Configuration Guide*. For general information on using the color copier/printer, your computer, application software, or network, see the manuals that accompany those products.

NOTE: The term “E-750” is used to refer to the supplier E-750. The term “copier/printer” is used to refer to the machine. The term “Windows” is used to refer to Windows 98, Windows Me, Windows NT 4.0, Windows 2000, Windows XP, and Windows Server 2003, wherever appropriate.

The E-750 includes support for Fiery WebTools™ and software for Command WorkStation, which enables an operator to manage all jobs sent to the E-750. Although it may not be the case at all sites, the documentation for this product assumes the presence of an operator who controls and manages jobs sent by users from remote workstations.

About this manual

This manual covers the following topics:

- Installing printer files on Windows and Mac OS computers
- Setting up printing connections on Windows and Mac OS computers
- Installing Fiery® utilities/other user software on Windows and Mac OS computers

Specifications

- Intel Mobile Pentium III 850 MHz CPU
- 256MB (Max.512MB) RAM
- 10GB hard disk drive (minimum)
- Supports AppleTalk, TCP/IP, and IPX/SPX protocols simultaneously
- Supports Port 9100
- Supports twisted pair (Fast Ethernet 100BaseTX or Ethernet 10BaseT)
- Supports Adobe PostScript 3
- Supports PCL 6ec printing (for Windows computers)

In addition, two Adobe Multiple Master fonts are included and are used for font substitution in PDF files.

- Includes 81 scalable PCL fonts
- Built-in ColorWise color management and NetWise™ networking management
- Fiery WebTools, including WebSetup™ (Windows only), Status™, WebLink™, Installer™, WebDownloader™, and WebScan™
- Fiery utilities, including Fiery Downloader™, Fiery Mail Port™, and Fiery Spooler™ (Mac OS only)
- Fiery Remote Scan™
- ColorWise Pro Tools
- Command WorkStation (Windows only) software
- Command WorkStation LE (Mac OS X Native only) software
- Supports Internet Printing Protocol (IPP) for Windows Me, and Windows 2000/XP/Server 2003
- Supports E-mail printing
- Supports PrintMe™ (available as an option)

User software

E-750 user software is provided on the User Software CD.

Adobe PostScript Printer Driver	Enables you to print to the E-750 from Windows 98/Me, Windows NT 4.0, and Mac OS computers; also supports E-750 and PostScript 3 features. Windows 2000/XP/Server 2003 users should use the PostScript Printer Driver provided with those operating systems.
PostScript Printer Description (PPD) file	For use with the PostScript printer driver that allows the E-750 to appear in the Print and Page Setup dialog boxes of popular applications. The E-750 PPDs provide information about the E-750 and your particular copier/printer model to the application and printer driver you are using.
PostScript fonts (Mac OS only)	PostScript screen and printer fonts that correspond to the PostScript printer fonts installed on the E-750. For a complete list of PostScript fonts installed on the E-750, see Appendix B of the <i>Printing Guide</i> .
PCL Printer Driver (Windows only)	Enables you to print to the E-750 from Windows computers; supports E-750 PCL print features.
PCL PDD file	For use with the PCL printer driver that enables the E-750 to appear in Print and Page Setup dialog boxes in popular applications. The E-750 PDDs provide information about the E-750 and your particular copier/printer model to the application and printer driver you are using.
Fiery Downloader	Enables you to print PostScript files, PCL files, Encapsulated PostScript (EPS) files, TIFF version 6.0 files, and Portable Document Format (PDF) versions 1.2 and 1.3 files directly to the E-750 without opening the application in which they were created. You can also use it to manage the printer fonts installed on the E-750.

Fiery Spooler (Mac OS 9.x only)	Enables you to view the order and priority of print jobs, customize printer settings for jobs, delete jobs, and move jobs between queues. You can also use it to view job accounting information.
ColorWise Pro Tools	ICC-open color management; enables you to edit and download ICC profiles.
Command WorkStation (Windows only)	Enables the operator to control the E-750 functions from Windows 98/Me and Windows NT/2000/XP computers. To use Command WorkStation, see the Job Management Guide .
Command WorkStation LE (Mac OS X Native Mode only)	Enables the operator to control E-750 functions from Mac OS X (10.2.x) Native Mode computers. To use Command WorkStation LE, see the Job Management Guide .
EFI Fiery Mail Port (Windows only)	Enables you to send jobs to the E-750 in the form of e-mail attachments by adding the EFI Fiery Mail Port software as a printer port.
Color management files	ICM (Windows) and ColorSync (Mac OS) color management files that enable you to maintain consistent color from your original artwork to the colors displayed on your monitor and then to the printed output.
Color reference files	Reference pages that you can print to view the range of colors available on your E-750. For the most predictable color results, refer to these pages when defining colors in applications. For more information on color management, see the Color Guide .
MRJ (Mac OS 9.x only)	Mac OS Runtime for Java (MRJ) is required by all Java-based Fiery utilities. If MRJ is not detected when you install these utilities, the MRJ installer is automatically launched.

NOTE: You can install PostScript and PCL printer drivers and printer description files from the User Software CD or from the E-750 with the Installer WebTool. For instructions, see [“Using the Fiery WebTools Installer”](#) on page 3-2.

Fiery WebTools

Fiery WebTools allow you to manage your E-750 remotely from the Internet or from your company's intranet. You access Fiery WebTools from the Fiery WebTools home page.

NOTE: To find out which Fiery WebTools are supported, see “Specifications” on page xii.

Fiery WebTools	Summary	For more information
Status	Shows you the jobs currently processing and printing.	See the <i>Printing Guide</i> .
WebLink	Provides a link to another web page, provided you have a valid Internet connection.	See the <i>Printing Guide</i> and the <i>Configuration Guide</i> .
Installer	Allows you to download E-750 printer file installers directly from the server.	See Chapter 3 .
WebDownloader	Allows you to download PostScript, PCL, EPS, and PDF files to the E-750.	See the <i>Printing Guide</i> .
WebSetup (Windows only)	Allows you to modify the E-750 configuration (Setup) remotely. This function requires the Administrator password, if one has been set.	See the <i>Configuration Guide</i> .
WebScan	Allows you to view and print images that have been scanned to the copier/printer.	See the <i>Printing Guide</i> .

System requirements

System requirements are described in detail in the printed *Quick Start Guide* provided in your media pack.

Chapter 1: Installing User Software on a Windows Computer

This chapter describes the procedures for installing software and setting up printing from a computer using a supported version of Windows. For the Windows versions supported, see the [Quick Start Guide](#).

The general steps for installing the software are as follows:

- Install the PostScript printer driver or PCL printer driver and corresponding printer driver files and set up the printer driver to communicate with the E-750.
- Install Fiery utilities and user software—Fiery Remote Scan, Fiery Downloader, Fiery Printer Delete Utility, ColorWise Pro Tools, and Command WorkStation.
- Install Adobe Acrobat and PitStop for use with DocBuilder Pro.
- Configure the connection for Fiery utilities and user software.
- Copy additional files from the User Software CD as required.

In addition to using the User Software CD, you can download printer drivers from the E-750 with the Installer WebTool (if the administrator has enabled Internet access to the E-750). For instructions, see [“Using the Fiery WebTools Installer”](#) on page 3-2. Once you download the printer files, the installation process is identical to installing from the User Software CD.

Setting up PostScript or PCL printing with Windows 98/Me

To set up the E-750 as a PostScript or PCL printer, you must install the PostScript or PCL printer driver for Windows 98/Me and the corresponding printer description files. You must also configure either a local connection for printing directly or a network connection for printing over the network.

If you are printing using SMB (Server Message Block), you can connect to the E-750 and install the printer drivers in a single procedure. For more information, see [“Setting up SMB printing with Windows 98/Me”](#) on page 1-10.

NOTE: The procedures for setting up printing with the PostScript and PCL printer drivers are similar. The following illustrations show the PostScript drivers. Any differences are noted.

Installing the PostScript or PCL printer driver for Windows 98/Me

NOTE: The following procedures display Windows 98 illustrations; Me differences are noted.

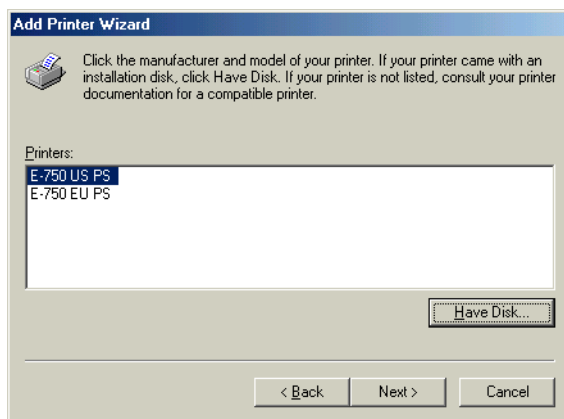
TO INSTALL THE POSTSCRIPT OR PCL PRINTER DRIVER FOR WINDOWS 98/ME

1. Click **Start**, choose **Settings**, and then choose **Printers**.
2. In the **Printers** window, double-click the **Add Printer** icon and click **Next**.
3. Specify printing using a **Local printer** and click **Next**.
This procedure describes the installation of a local printer. You can modify the connection later, according to your network type.
4. In the dialog box displaying lists of manufacturers and printers, click **Have Disk**.
The **Install From Disk** dialog box prompts you for the disk.
5. If you are installing from the CD, type the name of the CD-ROM drive (for example, **D:**), and click **Browse**. Browse to **English\Prntdrv\Ps_drvr\Win_9x_ME**.
If you are installing from the files you downloaded using the **Installer WebTool**, browse to **prntdrv\Prntdrv\Ps_drvr\Win_9x_ME**.
6. Make sure **"Oemsetup.inf"** is selected and click **OK**.
The path is copied to the **Install From Disk** dialog box.
7. Verify the path is correct and click **OK**.



8. **Select the E-750 printer driver appropriate for your printer and click Next.**

NOTE: Use E-750 EU PS when A4 is the default paper size. Use E-750 US PS when Letter is the default paper size.



9. **Select the LPT1 port and click Next.**

You will configure the port later, according to your network type.

10. **Enter a name for the E-750.**
11. **To make the E-750 the default printer, select Yes; if not, select No and click Next.**
12. **Select No to printing the test page and click Finish.**

The necessary PostScript or PCL files are installed to your computer.

Configuring installed options

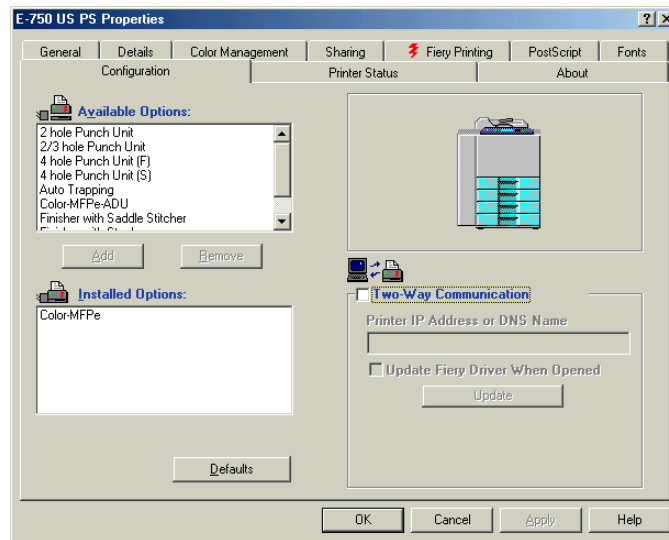
After you have completed the printer driver installation, you must configure the E-750 for the options installed on the copier/printer. This allows the E-750 to take advantage of the copier/printer options. You can configure the options manually. Or, for TCP/IP network connections, you can use the Two-Way Communication feature to configure the options automatically.

Configuring installed options manually

The following procedure describes how to manually configure the E-750 for the options installed on the copier/printer.

TO CONFIGURE OPTIONS MANUALLY FOR WINDOWS 98/ME

1. Click **Start**, choose **Settings**, and then choose **Printers**.
2. Click the **E-750** icon and choose **Properties** from the **File** menu.
3. Click the **Configuration** tab.
4. Select an installed option from the **Available Options** list.
5. Click **Add** to move the option to the **Installed Options** list.



Copier Type—Color-MFPe, Color-MFPe-ADU

Punch Option—Not Installed, 2 hole Punch Unit, 2/3 hole Punch Unit, 4 hole Punch Unit (F), 4 hole Punch Unit (S)

NOTE: Select 2/3 hole Punch Unit to use the Punch Option.

Sorter and Stapler—Not Installed, Finisher with Saddle Stitcher, Finisher with Stapler

Large Capacity Feeder—Not Installed, Installed

Auto Trapping—Not Installed, Installed

NOTE: The Auto Trapping option is not available with the PCL printer driver.

6. Click **Apply**, and then click **OK**.

Configuring installed options and updating print options settings automatically

If you have a TCP/IP-enabled network, you can automatically update your printer driver to reflect the options currently installed on the copier/printer. When the printer driver is first installed, the options have default settings that were set up in E-750 Setup or ColorWise Pro Tools. When you update the printer driver with the Two-Way Communication feature, you allow the E-750 to complete the actual setting.

The Two-Way Communication feature also updates Expert Color Settings options to reflect the current color settings on the E-750. To access the Expert Color Settings options, click the Expert Settings tab in the ColorWise print option bar of the Fiery printing tab of your printer driver. For more information, see the [Color Guide](#).

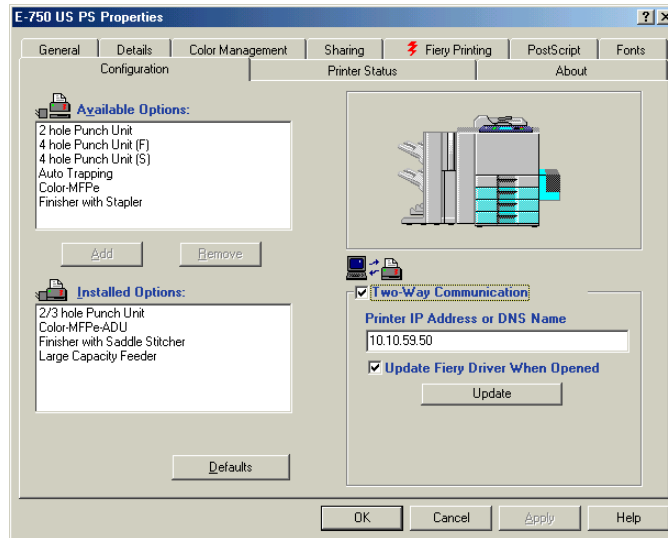
TO CONFIGURE INSTALLED OPTIONS AND UPDATE PRINT OPTIONS SETTINGS AUTOMATICALLY FOR WINDOWS 98/ME

1. Click **Start**, choose **Settings**, and then choose **Printers**.
2. In the **Printers** window, select the icon for the E-750 PostScript or PCL printer driver.
3. Choose **Properties** from the **File** menu.
4. Click the **Configuration** tab.

1

1-6 Installing User Software on a Windows Computer

5. Select Two-Way Communication.



6. Type the E-750 IP address or DNS name.

7. To display the printer's current default settings when opened, select Update Fiery Driver When Opened.

8. Click Update.

9. To receive an e-mail notification after your job has been printed, select Enable E-mail Notification, and type in the e-mail address to which an e-mail notification is sent.

You will also receive e-mail notification of any errors that occur during printing.

NOTE: Enable E-mail Notification is displayed only if E-mail Service is enabled at Setup.

10. Click OK.

Completing the Windows 98/Me printer connection

To print from Windows 98/Me, you should already have set up network servers, if any, and set up the E-750 to accept print jobs from your computer.

To complete the Windows 98/Me connection, you must configure a connection on each Windows computer for the network.

Completing the Windows 98/Me IPX/SPX or IPX (Novell) connection

If you are printing through a Novell server, the Novell network and file server should be set up before you begin. The file server should be configured with a print server and print connection for the E-750. For details, see your NetWare documentation and the *Configuration Guide*.

To print from Windows 98/Me computers over IPX (Novell), you must first set up IPX/SPX protocols, and then configure the E-750 by choosing the IPX frame type and entering the settings for the port you use.

TO SELECT A FRAME TYPE FOR IPX/SPX PRINTING FOR WINDOWS 98/ME

- 1. Click Start, choose Settings, and then choose Control Panel.**
- 2. Double-click the Network icon.**

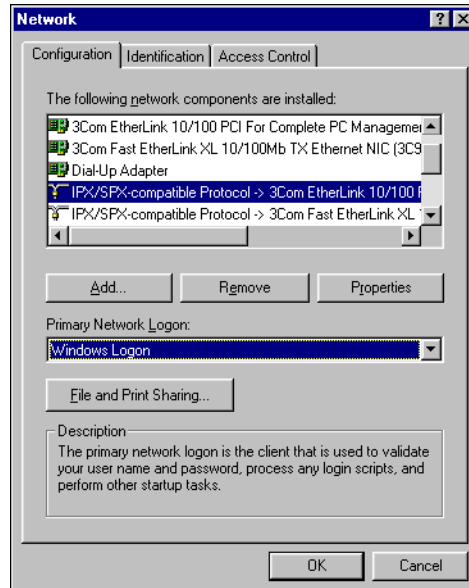
Make sure that IPX/SPX-compatible Protocol is listed in the installed network components pane.

For instructions, see your Windows 98/Me documentation or contact Microsoft Technical Support.

1

1-8 Installing User Software on a Windows Computer

3. Double-click the IPX/SPX-compatible Protocol icon.



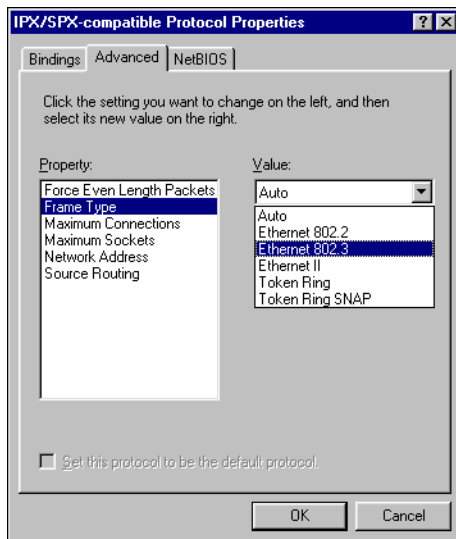
4. Click the Advanced tab.
5. Select Frame Type in the Property list.
6. In the Value menu, choose the Frame Type that corresponds to the one set in E-750 Network Setup.

If necessary, print the Configuration page from the E-750 Control Panel to determine which frame type(s) are configured.

1

1-9 Setting up PostScript or PCL printing with Windows 98/Me

NOTE: Do not select Auto. Auto may not select the frame type specified on the E-750.



7. Click OK and close the Network Control Panel.
8. When prompted to restart your computer, click Yes.

TO SET UP A PORT FOR IPX (NOVELL) PRINTING WITH WINDOWS 98/ME

1. Click Start, choose Settings, and then choose Printers.
2. Click the E-750 printer icon and choose Properties from the File menu.
3. Click the Details tab and click Add Port.
A list of connection options appears.
4. In the Add Port dialog box, specify the network path or click Browse for a display of your network environment.
5. If you are using a NetWare file server, double-click the icon for the NetWare file server to use for printing to the E-750.

6. Click the printer icon for the NetWare print queue you want to use, and then click OK.

7. In the Add Port dialog box, verify that the network path is updated and click OK.

Your print jobs are transmitted to the specified print queue on the Novell file server. The E-750 polls the file server, and if jobs are present, they are transmitted to the E-750.

8. To confirm the connection, click the General tab, click Apply, and then click Print Test Page.

After the test page prints successfully, you are ready to print from the computer.

Setting up SMB printing with Windows 98/Me

SMB printing (also known as Windows or WINS printing) allows you to install the PostScript or PCL printer driver and printer description files on your computer from the E-750 using Point and Print, and print to a particular connection (Hold, Print, or Direct). To set up SMB printing, you must have the TCP/IP protocol and Client for Microsoft Networks installed.

Each connection (Hold, Print, or Direct) requires a new printer driver and printer description file. Repeat the procedure [“To set up SMB printing on Windows 98/Me”](#) for each connection. If you install more than one printer, give each a descriptive name during printer driver installation, such as E-750-Print or E-750-Hold, so you can easily identify printers.

BEFORE YOU BEGIN

- **Configure the E-750 for SMB printing in Run Setup>Network Setup>Service Setup>Windows Setup.**

SMB printing is referred to as Windows Printing in Setup, on the Control Panel Map, and on the Configuration page.

TO SET UP SMB PRINTING ON WINDOWS 98/ME

1. **Double-click the Network Neighborhood icon to display your network environment.**
2. **Browse for the printer you want to print to.**

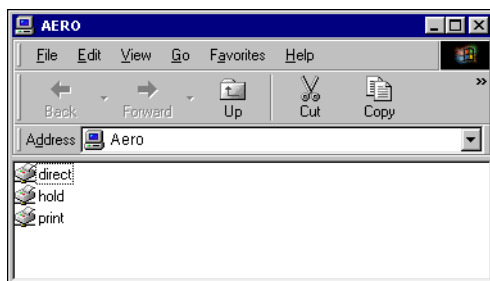
Browse for the name entered in Network Setup>Service Setup>Windows Setup>Server Name. For this information, see the Configuration page.

NOTE: You can also locate the printer using the Find feature on your Windows computer. Click Start, choose Find, and then choose Computer. Enter the name of the printer, and click Find Now.

If you are not able to locate your E-750, contact your network administrator.

3. **Double-click the name of the printer to display enabled print connections.**

NOTE: For a description of each print connection, see the *Configuration Guide*.



4. **Double-click the name of the connection you want to print to.**
5. **Select Yes to install the PostScript or PCL printer driver and printer description file for the selected connection.**

The Add Printer Wizard dialog box appears.

6. **Specify whether you print from MS-DOS based programs and click Next.**

If you choose Yes, you must capture a printer port before proceeding with the installation. For details, see your Windows documentation.

7. **Type a name for the E-750 in the Printer name field and choose whether to make it the default printer. Click Next.**
8. **To print a test page, choose Yes and click Finish.**

The necessary files are installed to your computer.

If the test page prints successfully, you are ready to print from the computer.

Setting up IPP printing with Windows 98/Me

With Internet Printing Protocol (IPP), print jobs are sent to the E-750 over the Internet.

IPP printing is supported on Windows 2000/XP/Server 2003 but can be enabled on Windows 98/Me computers by installing the wpnpins.exe client file (available on the Windows Me CD or the Windows 2000 Server CD). For more information about obtaining and installing this client, contact the Microsoft Corporation or Microsoft Technical Support.

NOTE: The IPP setup procedures are performed after installing the appropriate printer drivers. See [“To install the PostScript or PCL printer driver for Windows 98/Me”](#) on page 1-2.

BEFORE YOU BEGIN

1. **Prepare the E-750 for TCP/IP printing.**
2. **Make sure the E-750 is configured for IPP printing.**
For more information, see the [Configuration Guide](#).
3. **Specify the printing destination on your computer.**

TO SET UP IPP PRINTING WITH WINDOWS 98/ME

1. **Click Start, choose Settings, and then choose Printers.**
2. **In the Printers windows, right-click the icon for the E-750 PostScript printer driver and choose Properties.**
3. **Click the Details tab and click Add Port.**

The Add Port dialog box appears.

4. Enter the network path for the printer.
5. Click OK.

Setting up PostScript or PCL printing with Windows NT 4.0

To set up the E-750 as a PostScript or PCL printer, you must install the PostScript or PCL printer driver for Windows NT 4.0 and the corresponding printer description files. You must also configure the print connection between the computer and the E-750. If you are printing over a network, you must configure a network connection.

NOTE: The procedures for setting up printing with the PostScript and PCL printer drivers are similar. The following illustrations show the PostScript driver. Any differences are noted.

Installing the PostScript or PCL printer driver for Windows NT 4.0

The following procedures describe the installation of a local printer. Adding a printer to a local system requires that you log in to your local Windows NT 4.0 computer (not the network server domain) and that you are a member of the Administrators group. The procedure for adding a network printer is similar to adding a port. See [“Completing the Windows NT 4.0 TCP/IP and LPR connection”](#) on page 1-21.

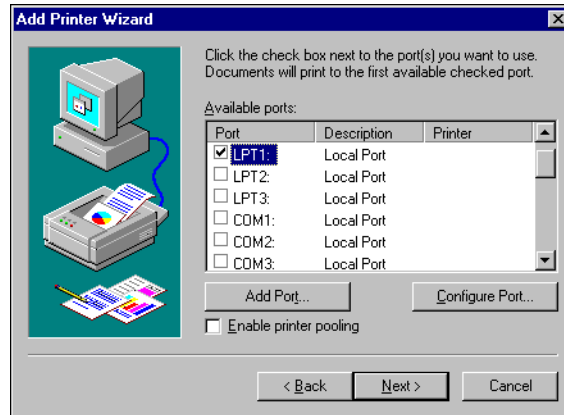
TO INSTALL THE POSTSCRIPT OR PCL PRINTER DRIVER FOR WINDOWS NT 4.0

1. If you are installing from the User Software CD, insert it into the CD-ROM drive.
2. Click Start, choose Settings, and then choose Printers.
3. Double-click Add Printer.
4. To install a printer locally, select My Computer and click Next.

My Computer is available if you logged in to a computer on which you have Administrator privileges. If it is not available, you can add a network printer. The procedure is similar to adding a port (see [page 1-22](#)).

5. Select LPT1: and click Next.

This is a general installation that works for the parallel port connection. You can add a network port later, according to your network type.



6. In the dialog box displaying lists of manufacturers and printers, click Have Disk.

The Install From Disk dialog box prompts you for the disk.

7. If you are installing from the CD, type the name of the CD-ROM drive (for example, D:\) and click Browse.

If you are installing from files you downloaded using the Installer WebTool, type the name of your hard disk drive (for example, C:\) and click Browse.

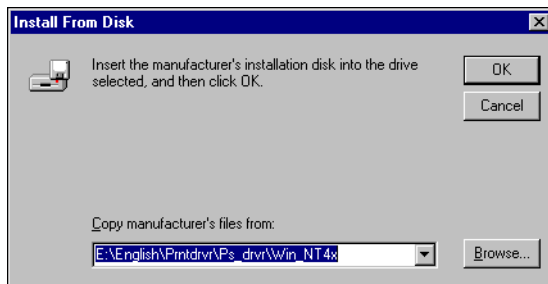
8. If you are installing from the CD, browse to the English\Prntdrv\Ps_drvr\Win_NT4x folder and click Open.

If you are installing from files you downloaded using the Installer WebTool, browse to the prntdrv\Prntdrv\Ps_drvr\Win_NT4x folder and click Open.

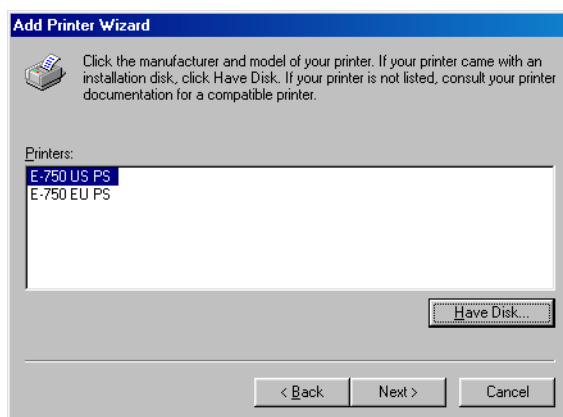
Make sure "Oemsetup.inf" or "Oemsetup" is selected.

The path is copied to the Install From Disk dialog box.

9. Verify that the path is correct and click OK.



10. In the Printers list, select the E-750 printer driver appropriate for your printer and click Next.



NOTE: Use E-750 EU PS when A4 is the default paper size. Use E-750 US PS when Letter is the default paper size.

11. Type a name for the E-750 in the Printer name field and indicate whether you want to make it the default printer. Click Next.
12. Indicate whether you want the printer installed as a shared printer, and click Next.
- If you select Shared, enter a Share Name for the printer and select the operating systems used by client computers. For information on shared printers, see the [Configuration Guide](#).
13. Click No to postpone printing a test page and click Finish.

When installation is complete, the Printers window is displayed with an icon for the newly installed printer.

Configuring installed options

After you have completed the printer driver installation, you must configure the E-750 to reflect the options installed on the copier/printer. This allows the E-750 to take advantage of the copier/printer options. You can configure the options manually; or for TCP/IP network connections, you can use the Two-Way Communication feature to configure the options automatically.

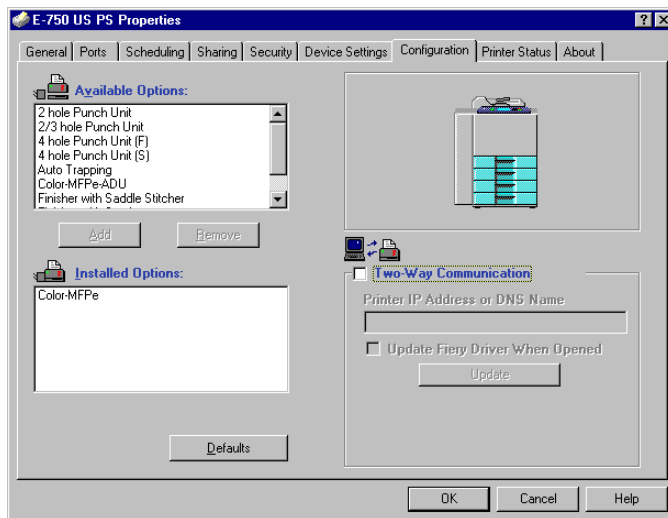
Configuring installed options manually

The following procedure describes how to manually configure the E-750 for the options installed on the copier/printer.

TO CONFIGURE INSTALLABLE OPTIONS FROM THE POSTSCRIPT PRINTER DRIVER FOR WINDOWS NT 4.0

1. Click Start, choose Settings, and then choose Printers.
2. Right-click the E-750 icon and choose Properties.
3. Click the Configuration tab.
4. Select an installed option from the Available Options list.

5. Click Add to move the option to the Installed Options list.



Copier Type—Color-MFPe, Color-MFPe-ADU

Punch Option—Not Installed, 2 hole Punch Unit, 2/3 hole Punch Unit, 4 hole Punch Unit (F), 4 hole Punch Unit (S)

NOTE: Select 2/3 hole Punch Unit to use the Punch Option.

Sorter and Stapler—Not Installed, Finisher with Saddle Stitcher, Finisher with Stapler

Large Capacity Feeder—Not Installed, Installed

Auto Trapping—Not Installed, Installed

NOTE: The Auto Trapping option is not available with the PCL printer driver.

6. Click OK to activate the current settings.

**TO CONFIGURE INSTALLABLE OPTIONS ON THE E-750 FROM
THE PCL PRINTER DRIVER**

1. Click **Start**, choose **Settings**, and then choose **Printers**.
2. Right-click the E-750 icon, and choose **Document Defaults** from the **File** menu.
3. Click the **Configuration** tab and specify the options installed on the E-750.
4. Select an installed option from the **Available Options** list, and click **Add** to move the option to the **Installed Options** list.

Copier Type—Color-MFPe, Color-MFPe-ADU

Punch Option—Not Installed, 2 hole Punch Unit, 2/3 hole Punch Unit, 4 hole Punch Unit (F), 4 hole Punch Unit (S)

NOTE: Select 2/3 hole Punch Unit to use the Punch Option.

Sorter and Stapler—Not Installed, Finisher with Saddle Stitcher, Finisher with Stapler

Large Capacity Feeder—Not Installed, Installed

Auto Trapping—Not Installed, Installed

5. Click **OK**.

You are ready to connect to your network type (see [“Completing the Windows NT 4.0 printer connection”](#) on page 1-21).

Configuring installed options and updating print options settings automatically

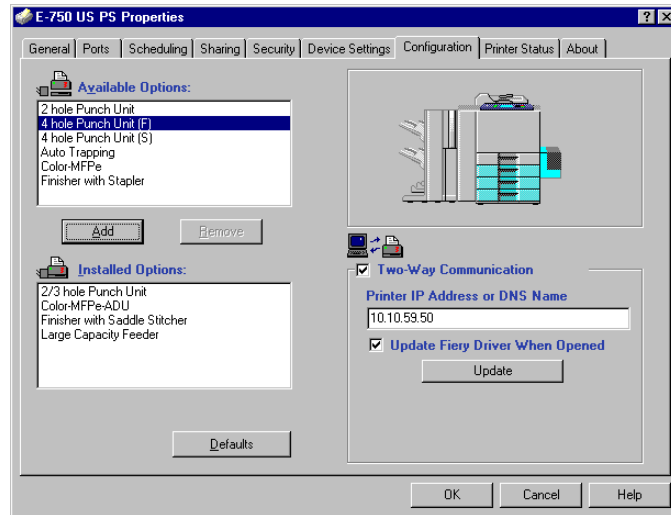
If you have a TCP/IP-enabled network, you can automatically update your printer driver to reflect the options currently installed on the E-750. When the printer driver is first installed, the installable options have default settings that were set up in E-750 Setup or ColorWise Pro Tools. When you update the printer driver with the Two-Way Communication feature, you allow the E-750 to complete the actual setting.

The Two-Way Communication feature also updates Expert Color Settings options to reflect the current color settings on the E-750. To access Expert Color Settings options, click the Expert Settings tab in the ColorWise print option bar of the Fiery printing tab of your printer driver. For more information, see the [Color Guide](#).

TO SET UP TWO-WAY COMMUNICATION FOR POSTSCRIPT OR PCL PRINTER DRIVERS FOR WINDOWS NT 4.0

- 1. Click Start, choose Settings, and then choose Printers.**
- 2. In the Printers window, select the icon for the E-750 PostScript or PCL printer driver.**
- 3. Choose Properties from the File menu.**
- 4. Click the Configuration tab.**

NOTE: The following illustration shows the PostScript printer driver. The PCL printer driver is similar except for the tabs and the title bar.

5. Select Two-Way Communication.**6. Enter the E-750 IP address or DNS name.****7. If you want your printer driver to display the current settings when opened, select Update Fiery Driver When Opened.****8. Click Update.****9. To receive an e-mail notification after your job has been printed, select Enable E-mail Notification, and type in the e-mail address to which an e-mail notification is sent.**

You will also receive e-mail notification of any errors that occur during printing.

NOTE: Enable E-mail Notification is displayed only if E-mail Service is enabled at Setup.

10. Click OK.

Completing the Windows NT 4.0 printer connection

To print from Windows NT 4.0, you must:

- Set up network servers, if any.
- Set up the E-750 to accept print jobs from your computer.
- Configure a port on each Windows NT 4.0 computer for the network type.

To do this	See
Configure the TCP/IP (LPR port) connection	“Completing the Windows NT 4.0 TCP/IP and LPR connection” on page 1-21.
Configure the IPX (Novell) connection	“Completing the Windows NT 4.0 IPX (Novell) connection” on page 1-24.

Completing the Windows NT 4.0 TCP/IP and LPR connection

After installing the PostScript or PCL printer driver and printer driver files, complete the setup for the TCP/IP and LPR connection by performing the following steps:

- Prepare the E-750 to accept print jobs using TCP/IP and LPR protocols.
For details, see the [Configuration Guide](#).
- Enable LPD from the E-750 Control Panel. For details, see the [Configuration Guide](#).
- Configure the computer for the TCP/IP connection.

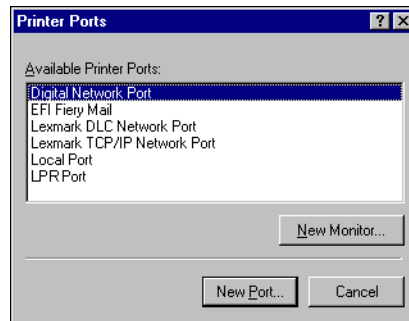
Before you continue, contact the system administrator for the IP address assigned to the E-750, as well as the subnet mask and the gateway address, if they are used.

The TCP/IP protocol should already be installed on your Windows NT computer.

TO SET UP TCP/IP AND LPR PRINTING FOR WINDOWS NT 4.0

1. **Open the Properties dialog box for the E-750 and click the Ports tab.**
2. **Click Add Port.**

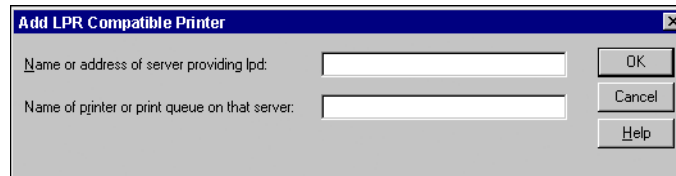
The available port types are displayed.



3. **Select LPR Port and click New Port.**

If the LPR port is not listed, install the TCP/IP network protocol and Microsoft TCP/IP printing software. See your Windows documentation.

4. **Type the IP address of the E-750.**



If your network uses Domain Name Services (DNS), enter the DNS name assigned to the E-750 instead of the IP address.

5. **Type one of the following printer names, depending on the E-750 connection you want to print to.**

print
hold

6. Click OK.

The computer checks the address or DNS name you entered and notifies you if it cannot resolve the address.

7. Click Close in the Printer Ports dialog box.

The new port configuration is reflected in the Ports tab. You must close the Printer Properties dialog box to verify the connection.

8. Click OK to close the Printer Properties dialog box.**9. Reopen the Printer Properties dialog box.****10. Click the General tab and click Print Test Page.**

When you print, your PostScript or PCL files are transmitted over the LPR Port connection to the E-750.

11. Click OK to close the Printer Properties dialog box.

Completing the Windows NT 4.0 IPX (Novell) connection

Complete the setup for the IPX (Novell) connection as follows:

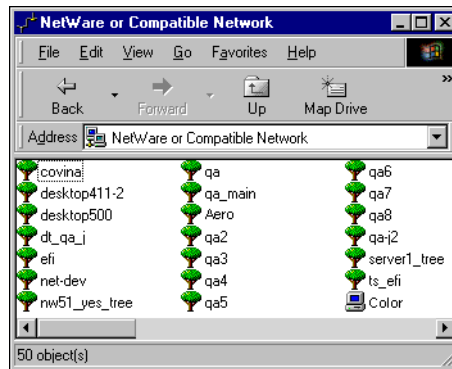
- Configure the Novell network and file server for handling E-750 print jobs. The file server should be configured with a print server and print connection for the E-750. For details, see your NetWare documentation.
- Prepare the E-750 for IPX printing.
- Set up the IPX connection on the computer.

NetWare protocols (NWLink IPX/SPX Compatible Transport) and NetWare client services should already be installed on the Windows NT 4.0 computer.

TO SET UP IPX (NOVELL) PRINTING FOR WINDOWS NT 4.0

1. Double-click Network Neighborhood.
2. Double-click NetWare or Compatible Network.

A list of NetWare servers appears.



3. Double-click the NetWare Tree or File Server on which the network administrator defined a print connection for the E-750.

You may have to log in to the file server to see the print connections.

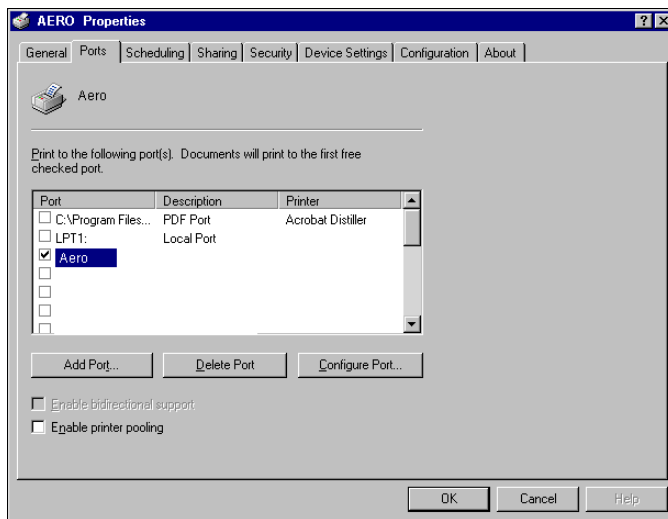
4. Double-click the print connection defined for the E-750.

5. If the NetWare server does not have a suitable driver for the E-750, you may be asked if you want to set up the printer on your computer. Click Yes.
6. Click OK to install the E-750 PostScript printer driver.
7. Follow steps 6 to 13 of the procedure on page 1-14.

When installation is complete, a new printer window appears, with the name of the print queue on the NetWare server.

8. Choose Properties from the File menu and click the Ports tab.

Verify that the connection to the NetWare queue is listed and selected as a port for the E-750.



9. Click the General tab and click Print Test Page.
10. In the printer Job Notes window, type user and job identification information and click OK.

The Test Page remains listed in the queue window until it is printed.

The E-750 polls the NetWare server for print jobs in the print connection defined for the E-750. When you print, your PostScript files are spooled to that connection and transmitted over the queue "port" to the E-750.

Setting up SMB printing on Windows NT 4.0

SMB printing (also known as Windows printing) allows you to install the PostScript or PCL printer driver and printer description files, and print from your computer to a particular print connection (Hold, Print, or Direct) on the E-750. These instructions assume you have installed the TCP/IP protocol and Client for Microsoft Networks.

Each connection (Hold, Print, or Direct) requires a new printer driver and printer description file. To set up printing to a second or third print connection, repeat the procedure “[To set up SMB printing on Windows NT 4.0](#)” on page 1-27. If you install more than one printer, give each a descriptive name during printer driver installation, such as E-750-Print or E-750-Hold, so you can easily identify printers.

NOTE: To change printer defaults and configure installable options from Windows NT 4.0, you must log on with the special log-in name, ‘efi_admin_efi’ (instead of Administrator) and use the password specified in E-750 Setup. If you log on as a User, you can install the printer driver through Point and Print, but you cannot modify printer defaults and configure installable options.

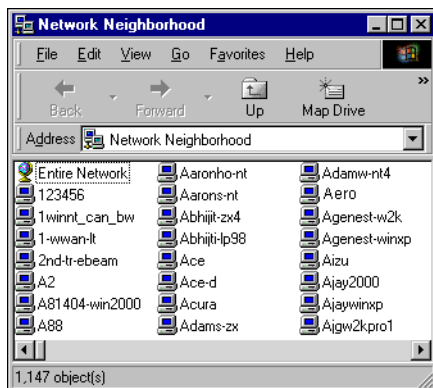
BEFORE YOU BEGIN

- **Configure the E-750 for SMB printing in Run Setup>Network Setup>Service Setup>Windows Setup.**

SMB printing is referred to as Windows Printing in Setup, on the Control Panel Map, and on the Configuration page. For more information, see the [Configuration Guide](#).

TO SET UP SMB PRINTING ON WINDOWS NT 4.0

1. Double-click Network Neighborhood.



2. Browse for the printer you want to print to.

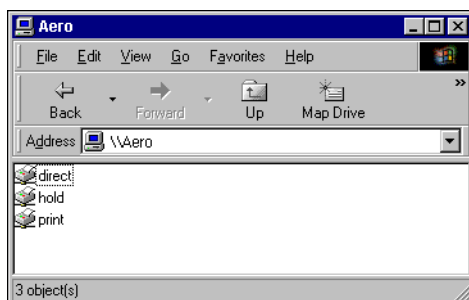
The printer name you are browsing for is the name entered in Network Setup > Service Setup > Windows Setup > Server Name. For this information, see the Configuration page.

The amount of network traffic determines the amount of time required for the Browse function.

NOTE: You can also locate the printer with the Find feature on your Windows computer. Click Start, choose Find, and then choose Computer. Enter the name of the printer, and click Find Now.

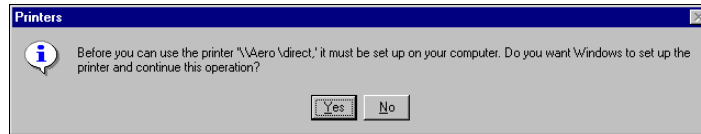
If you are not able to locate your E-750, contact your network administrator.

3. Double-click the name of the E-750 to display enabled print connections.



4. Double-click the name of the connection you want to print to.

The Printers dialog box appears, asking whether you want to set up the printer.



5. Select Yes to complete the installation for the selected connection.

Windows NT 4.0 downloads the printer driver and printer description files from the E-750 to your computer and installation is complete.

Setting up PostScript or PCL printing with Windows 2000/XP/Server 2003

NOTE: To set up the E-750 as a PostScript or PCL printer, you must install the PostScript or PCL printer driver for Windows 2000/XP/Server 2003 and the corresponding printer description files. You must also configure the print connection between the computer and the E-750. If you are printing over a network, you must configure a network connection. For Windows Server 2003, use the Windows 2000/XP printer driver.

NOTE: The procedures for configuring the options for the PostScript and PCL printer drivers are similar. The following illustrations show the PostScript driver. Differences are noted.

Installing the PostScript or PCL printer driver for Windows 2000/XP

If you are upgrading from an earlier version of the software, use the Fiery Printer Delete Utility to remove old printer drivers. For details, see [“Installing Fiery utilities”](#) on page 1-53 and [“To use Fiery Printer Delete Utility”](#) on page 1-56.

**TO INSTALL THE POSTSCRIPT OR PCL PRINTER DRIVER
FOR WINDOWS 2000/XP/SERVER 2003**

1. On Windows 2000, click Start, choose Settings, and then choose Printers to display the Printers window.

On Windows XP/Server 2003, click Start and choose Printer and Faxes.

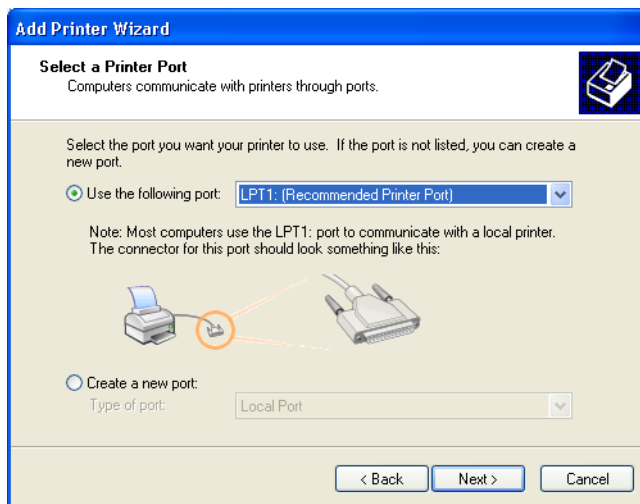
2. On Windows 2000, double-click the Add Printer icon and click Next.

On Windows XP/Server 2003, click Add Printer.

3. Specify printing using a Local printer and click Next.

This procedure describes the installation of a local printer. You can modify the connection later, according to your network type.

4. Select LPT1: and click Next.



5. In the dialog box displaying lists of manufacturers and printers, click Have Disk.

The Install From Disk dialog box prompts you for the disk.

6. Type the name of the CD-ROM drive (for example, D:\) and click Browse. Browse to the English\Prntdrv\Ps_drvr\Win_2K_XP folder.

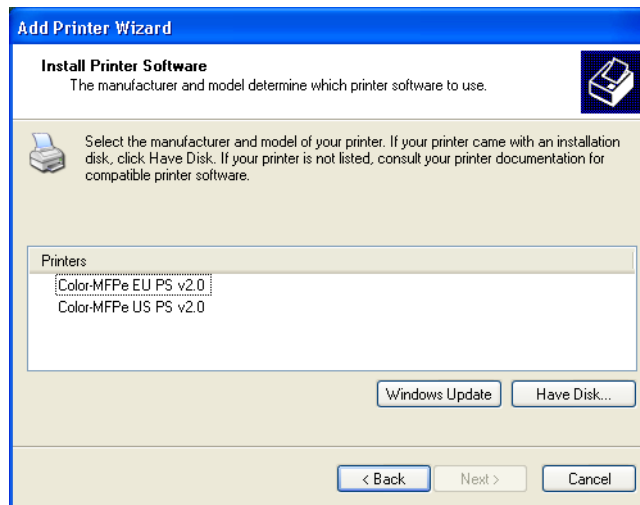
If you are installing from the files you downloaded using the Installer, browse to prntdrv\Prntdrv\Ps_drvr\Win_2K_XP and click Open.

Make sure “Oemsetup.inf” or “Oemsetup” is selected and click Open.

7. Verify the path is correct and click OK.

The path is copied to the Install From Disk dialog box.

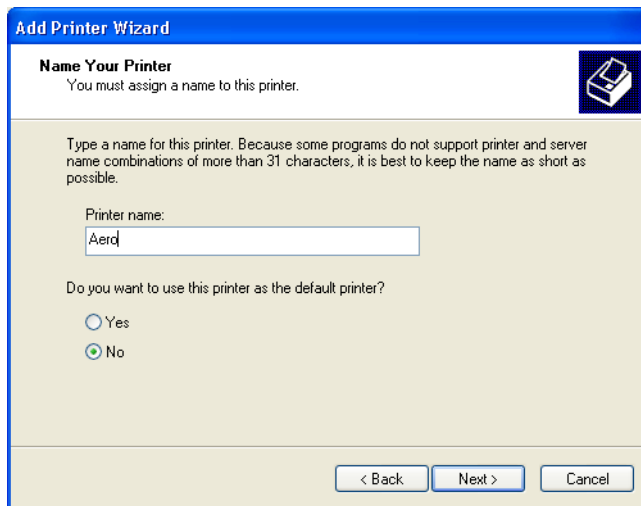
8. In the Printers box, select the E-750 printer driver appropriate for your printer and click Next.



NOTE: Use E-750 EU PS when A4 is the default paper size. Use E-750 US PS when Letter is the default paper size.

9. Type a name for the E-750 in the Printer name field.

This name will be used in the Printers window and the queues window.



10. Follow the instructions in the remaining dialog boxes.

When asked whether to print a test page, select No.

The necessary files are installed to your hard disk.

NOTE: The Digital Signature Not Found dialog box indicates that the printer driver for Windows 2000 does not have a Microsoft digital signature. However, printing to the E-750 is processed correctly, so click Yes to continue with installation.

11. If this is the first printer driver you are installing on the computer, you may be prompted to install files from the Windows 2000 CD. Insert the CD-ROM, browse to the win2000\english\i386 folder, and then click OK.

When installation is complete, the Printers window appears with an icon for the newly installed printer. You must now configure the options installed on your copier/printer.

Configuring installed options

After you have completed the printer driver installation, you must configure the E-750 to reflect the options installed on the copier/printer. This allows the E-750 to take advantage of the copier/printer options. You can configure the options manually; or for TCP/IP network connections, you can use the Two-Way Communication feature to configure the options automatically.

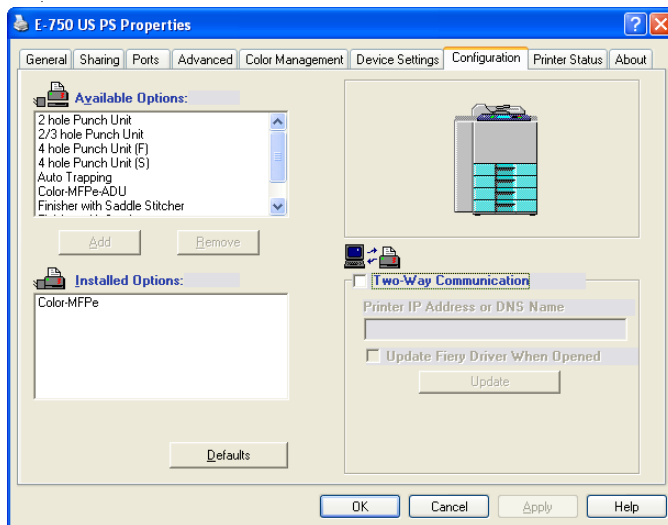
Configuring installed options manually

The following procedure describes how to manually configure the E-750 for the options installed on the copier/printer.

TO CONFIGURE INSTALLABLE OPTIONS ON THE E-750 FROM THE POSTSCRIPT PRINTER DRIVER FOR WINDOWS 2000/XP/SERVER 2003

1. On Windows 2000, click Start, choose Settings, and then choose Printers.
On Windows XP, click Start, and choose Printers and Faxes.
2. Right-click the E-750 icon and choose Properties.
3. Click the Configuration tab.
4. Select an installed option from the Available Options list.

5. Click Add to move the option to the Installed Options list.



Copier Type—Color-MFPe, Color-MFPe-ADU

Punch Option—Not Installed, 2 hole Punch Unit, 2/3 hole Punch Unit, 4 hole Punch Unit (F), 4 hole Punch Unit (S)

NOTE: Select 2/3 hole Punch Unit to use the Punch Option.

Sorter and Stapler—Not Installed, Finisher with Saddle Stitcher, Finisher with Stapler

Large Capacity Feeder—Not Installed, Installed

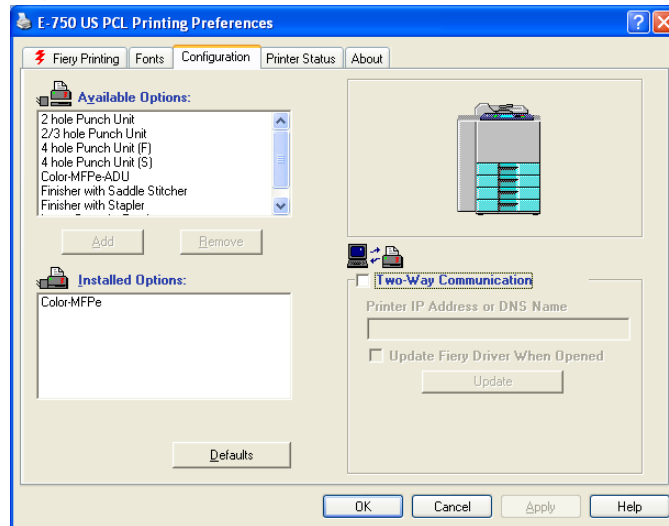
Auto Trapping—Not Installed, Installed

NOTE: The Auto Trapping option is not available with the PCL printer driver.

TO CONFIGURE INSTALLABLE OPTIONS ON THE E-750 FROM THE PCL PRINTER DRIVER

1. Click Start, choose Settings, and then choose Printers.
2. Right-click the E-750 icon, and choose Printing Preferences.

3. Click the **Configuration** tab and specify the options installed on the E-750.
4. Select an installed option from the **Available Options** list, and click **Add** to move the option to the **Installed Options** list.



Copier Type—Color-MFPe, Color-MFPe-ADU

Punch Option—Not Installed, 2 hole Punch Unit, 2/3 hole Punch Unit, 4 hole Punch Unit (F), 4 hole Punch Unit (S)

NOTE: Select 2/3 hole Punch Unit to use the Punch Option.

Sorter and Stapler—Not Installed, Finisher with Saddle Stitcher, Finisher with Stapler

Large Capacity Feeder—Not Installed, Installed

Auto Trapping—Not Installed, Installed

5. Click **Apply**, then click **OK**.

You are ready to connect to your network type (see the next section [“Completing the Windows 2000/XP/Server 2003 printer connection”](#)).

Configuring installed options and updating print options settings

automatically

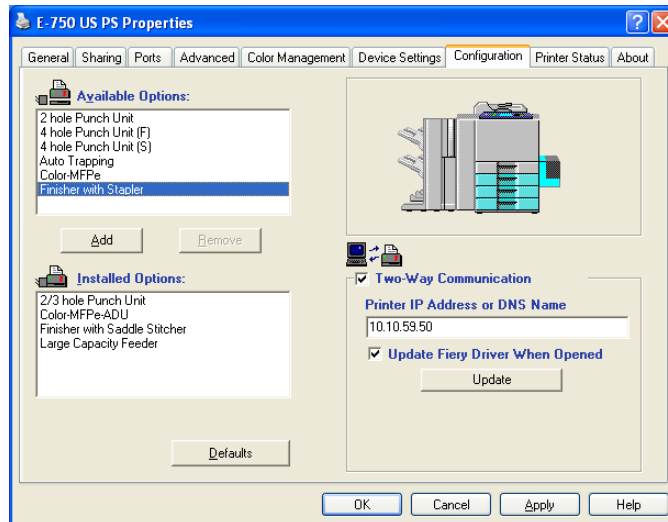
If you have a TCP/IP-enabled network, you can automatically update your printer driver to reflect the options currently installed on the E-750. When the printer driver is first installed, the installable options have default settings that were set up in E-750 Setup or ColorWise Pro Tools. When you update the printer driver with the Two-Way Communication feature, you allow the E-750 to complete the actual setting.

The Two-Way Communication feature also updates Expert Color Settings options to reflect the current color settings on the E-750. To access the Expert Color Settings options, click the Expert Settings tab in the ColorWise print option bar of the Fiery printing tab of your printer driver. For more information, see the [Color Guide](#).

SETTING UP TWO-WAY COMMUNICATION FOR POSTSCRIPT OR PCL PRINTER DRIVERS FOR WINDOWS 2000/XP/SERVER 2003

NOTE: The procedures for the PostScript and PCL printer drivers on Windows 2000/XP/Server 2003 are similar. The following procedure displays Windows XP illustrations using the PostScript printer driver. Differences are noted in the text.

1. On Windows 2000, click **Start**, choose **Settings**, and then choose **Printers**.
On Windows XP/Server 2003, click **Start**, and choose **Printers and Faxes**.
2. In the **Printers** window, select the icon for the E-750 PostScript printer driver.
3. For the PostScript printer driver, choose **Properties** from the **File** menu.
For the PCL printer driver, choose **Printing Preferences** from the **File** menu.
4. Click the **Configuration** tab.
5. Select **Two-Way Communication**.



6. Enter the E-750 IP address or DNS name.
7. If you want your printer driver to display the current settings when opened, select the **Update Fiery Driver When Opened** option.

8. Click **Update**.

9. Click **OK**.

Completing the Windows 2000/XP/Server 2003 printer connection

To print from Windows 2000/XP/Server 2003, you must:

- Set up network servers, if any.
- Set up the E-750 to accept print jobs from your computer.
- Configure a port on each Windows 2000/XP/Server 2003 computer for the network type.

To do this	See
Configure the TCP/IP (LPR port) connection	“Completing the Windows 2000/XP/Server 2003 TCP/IP and Port 9100 or LPR connection” on page 1-37.
Configure the IPX (Novell) connection	“Completing the Windows 2000/XP/Server 2003 IPX (Novell) connection” on page 1-42.

NOTE: The procedures for completing the printer connection for Windows 2000 and Windows XP are similar. Windows 2000 illustrations are used in the following procedure, with relevant Windows XP differences noted.

Completing the Windows 2000/XP/Server 2003 TCP/IP and Port 9100 or LPR connection

Once you have installed the PostScript and printer driver files, complete the setup for the TCP/IP and LPR connection as follows:

- Prepare the E-750 to accept print jobs using TCP/IP and LPR protocols.
For details, see the [Configuration Guide](#).
- Enable LPD or Port 9100 from the E-750 Control Panel.
For details, see the [Configuration Guide](#).
- Configure the computer for the TCP/IP connection.

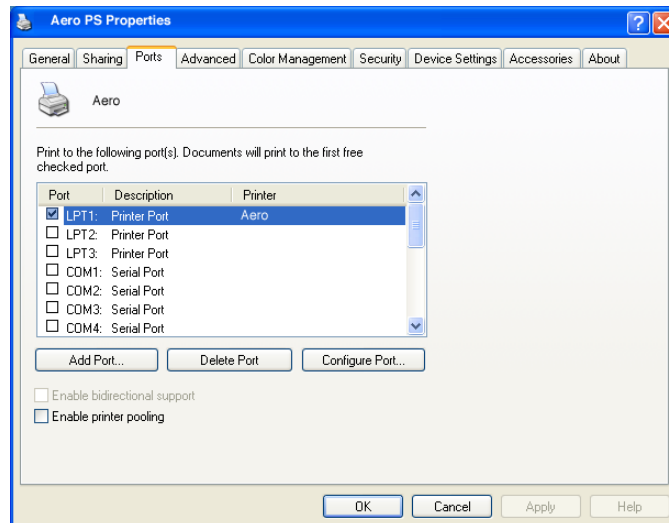
Before you continue, contact the system administrator for the IP address assigned to the E-750, as well as the subnet mask and the gateway address, if they are used.

The TCP/IP protocol should already be installed on the Windows 2000/XP/Server 2003 workstation.

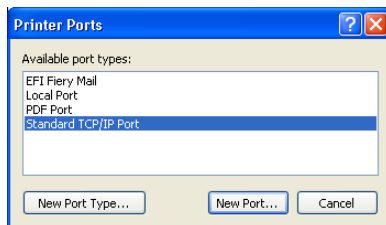
NOTE: You can also set up the LPR connection by installing Print Services for UNIX, which is supplied as an add-on Windows component with your Windows 2000/XP/Server 2003 CD. For more information, see your Windows documentation.

TO SET UP TCP/IP AND PORT 9100 OR LPR CONNECTION FOR WINDOWS 2000/XP/SERVER 2003

1. Open the Properties dialog box for the E-750 and click the Ports tab.
2. Click Add Port.



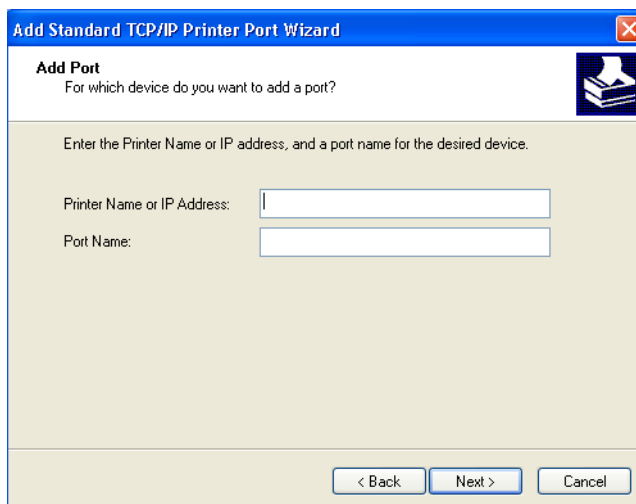
3. **Select Standard TCP/IP Port for Available port types and click New Port.**



4. **Click Next.**

The Add Standard TCP/IP Printer Port Wizard dialog box appears.

5. **Type the IP address of the E-750.**



6. **Click Next.**
7. **Make sure that Generic Network Card is selected as Standard for Device Type and click Next.**
8. **Click Finish to close the Add Standard TCP/IP Printer Port Wizard dialog box and click Close in the Printer Ports dialog box.**

9. Click **Configure Port** in the **Ports** tab of the **Properties** dialog box.

Configure Standard TCP/IP Port Monitor

Port Settings

Port Name: IP_10.11.143.101

Printer Name or IP Address: 10.11.143.101

Protocol

☒ Raw ☐ LPR

Raw Settings

Port Number: 9100

LPR Settings

Queue Name:

☐ LPR Byte Counting Enabled

☒ **SNMP Status Enabled**

Community Name: public

SNMP Device Index: 1

OK Cancel

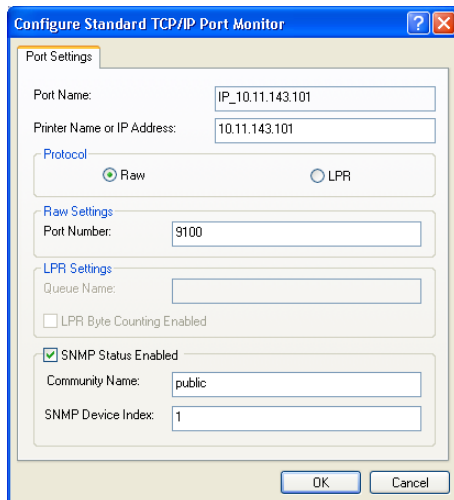
The **Configure Standard TCP/IP Port Monitor** dialog box appears.

10. If you have LPD printing enabled at the **E-750 Control Panel**, select **LPR** for **Protocol** and **LPR Byte Counting Enabled** under **LPR Settings**.

NOTE: You can also proceed without selecting **LPR Byte Counting Enabled** under **LPR** settings.

- 11. If you have Port 9100 printing enabled at the E-750 Control Panel, select Raw.**

The port number 9100 automatically appears under Raw Settings. You can print to the printer connection selected for Port 9100 printing at the E-750 Control Panel.



- 12. Enter the name of the print connection.**

For LPR, use print hold.

For Port 9100, manually enter the following port numbers for each print connection under Raw Settings:

direct: 9101

print: 9102

hold: 9103

- 13. Click OK to close the Configure Standard TCP/IP Port Monitor dialog box.**

Completing the Windows 2000/XP/Server 2003 IPX (Novell) connection

Complete the setup for the IPX (Novell) connection as follows:

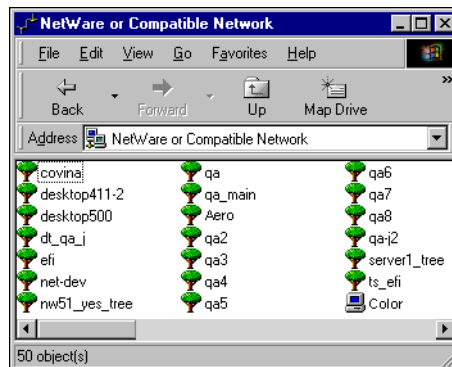
- Configure the Novell network and file server for handling E-750 print jobs. The file server should be configured with a print server and print connection for the E-750. For details, see your NetWare documentation.
- Prepare the E-750 for IPX printing.
- Set up the IPX connection on the computer.

NetWare protocols (NWLink IPX/SPX Compatible Transport) and NetWare client services should already be installed on the Windows 2000/XP/Server 2003 computer.

TO SET UP IPX (NOVELL) PRINTING FOR WINDOWS 2000/XP/SERVER 2003

1. On Windows 2000, double-click My Network Places.
On Windows XP, click Start, and then click My Network Places.
2. Double-click NetWare or Compatible Network.

A list of NetWare servers appears.



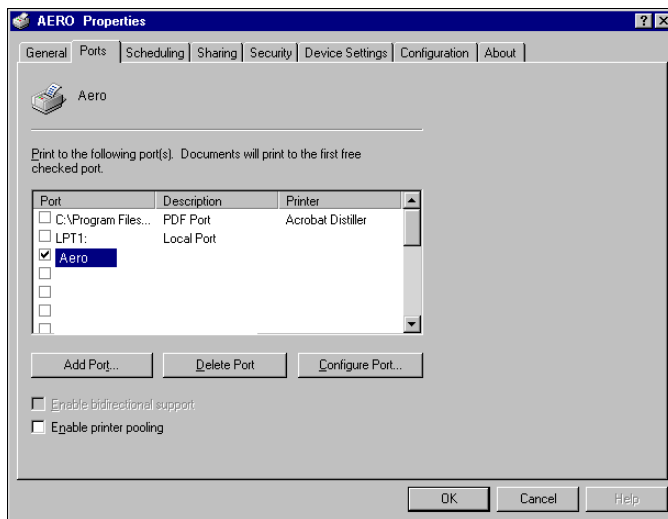
3. Double-click the NetWare Tree or File Server on which the network administrator defined a print connection for the E-750.
You may have to log in to the file server to see the print connections.
4. Double-click the print connection defined for the E-750.

5. If the NetWare server does not have a suitable driver for the E-750, you may be asked if you want to set up the printer on your computer. Click Yes.
6. Click OK to install the E-750 PostScript printer driver.
7. Follow the procedure that starts with [step 6 on page 1-14](#).

When installation is complete, a new printer window appears, with the name of the print queue on the NetWare server.

8. Choose Properties from the File menu and click the Ports tab.

Verify that the connection to the NetWare queue is listed and selected as a port for the E-750.



9. Click the General tab and click Print Test Page.
10. In the printer Job Notes field, type user and job identification information and click OK.

The Test Page remains listed in the queue window until it is printed.

The E-750 polls the NetWare server for print jobs in the print connection defined for the E-750. When you print, your PostScript files are spooled to that connection and transmitted over the queue “port” to the E-750.

Setting up SMB printing on Windows 2000/XP/Server 2003

SMB printing (also known as Windows printing) allows you to install the printer driver and associated files, and print from your computer to a particular print connection (Hold, Print, or Direct) on the E-750. These instructions assume you have installed the TCP/IP protocol and Client for Microsoft Networks.

Each connection (Hold, Print, or Direct) requires a new printer driver and printer description file. To set up printing to a second or third print connection, repeat the procedure, “[To set up SMB printing on Windows 2000/XP](#)”. If you install more than one printer, give each a descriptive name during printer driver installation, such as E-750-Print or E-750-Hold, so you can easily identify printers.

BEFORE YOU BEGIN

- **Configure the E-750 for SMB printing in Run Setup>Network Setup>Service Setup>Windows Setup.**

SMB printing is referred to as Windows Printing in Setup, on the Control Panel Map, and on the Configuration page. For more information, see the [Configuration Guide](#).

TO SET UP SMB PRINTING ON WINDOWS 2000/XP

1. **Open My Network Places.**
2. **Browse for the printer you want to print to.**

The printer name you are browsing for is the name entered in Network Setup>Service Setup>Windows Setup>Server Name. For this information, see the Configuration page.

The amount of network traffic determines the amount of time required for the Browse function.

NOTE: You can also locate the printer using the Search feature on your Windows computer. Right-click My Network Places and click Search for Computers. Type the name of the printer and click Search Now.

If you are not able to locate your E-750, contact your network administrator.

3. **Double-click the name of the E-750 to display enabled print connections.**

NOTE: For a description of each print connection, see the [Configuration Guide](#).

4. Double-click the desired print queue (Direct, Hold or Print).

Setting up IPP printing with Windows 2000/XP/Server 2003

With Internet Printing Protocol (IPP), print jobs are sent to the E-750 over the Internet.

IPP printing is supported directly for Windows 2000/XP/Server 2003 computers. IPP printing is not supported on Windows NT 4.0.

NOTE: The IPP setup procedures are performed after installing the appropriate printer drivers (see [“To install the PostScript or PCL printer driver for Windows 2000/XP/Server 2003”](#) on page 1-29).

BEFORE YOU BEGIN

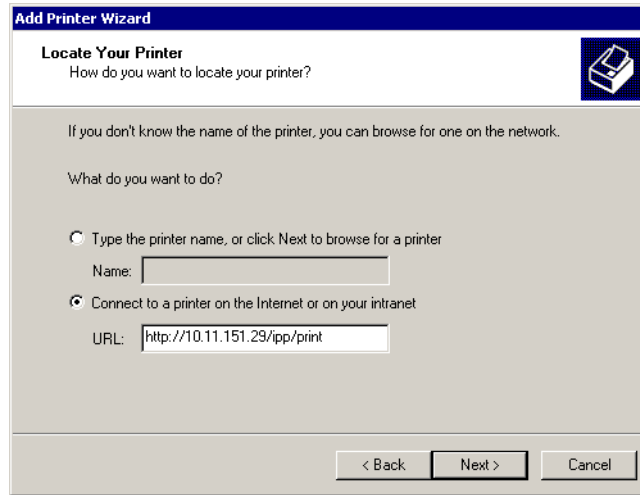
1. Prepare the E-750 for TCP/IP printing.
2. Make sure the E-750 is configured for IPP printing. For more information, see the [Configuration Guide](#).
3. Specify the printing destination on your computer.

TO SET UP IPP PRINTING WITH WINDOWS 2000/XP/SERVER 2003

1. On Windows 2000, click Start, choose Settings, and then choose Printers.
On Windows XP, click Start and choose Printers and Faxes.
2. On Windows 2000, double-click the Add Printer icon and click Next.
On Windows XP, click Add Printer.
3. Select Network printer and click Next.

4. **Select “Connect to a printer on the Internet or on your intranet.” Type an IP address or computer name in the URL field.**

The URL for the printer is the IP address or DNS name followed by “ipp” and the connection you want to print to (print, hold, or direct). Insert slashes between the different elements.



5. **Click Next.**

The Connect to Printer dialog box appears.

6. **Click OK.**

The Add Printer Wizard dialog box appears.

7. **If you are installing the PostScript printer for Windows 2000/XP for the first time, follow the procedure described on [page 1-29](#).**

If you have already installed the printer driver on your computer, choose the appropriate names from the Manufacturers and Printers lists and click OK.

8. **Indicate whether you want to make the E-750 the default printer and click Next.**
9. **Click Finish.**

Uninstalling the Printer Drivers

If you install the printer drivers using the installer, please use the Add/Remove Program. If you install the printer drivers using “Add Printer”, please use the Fiery Printer Delete Utility. If you install the printer drivers using SMB shared printing (either from the disk controller or from a Windows server), please just delete the printer icons.

Installing EFI Fiery Mail Port

The E-Mail Service provides a method to print and control the E-750 remotely. Jobs are sent to the E-750 in the form of e-mail attachments. You can set up e-mail printing on Windows computers by adding the EFI Fiery Mail Port software as a printer port.

To set up the E-750 for e-mail printing, see the [Configuration Guide](#). After Setup has been performed, install the software from the User Software CD onto your Windows computer, and then add a port.

NOTE: Procedures are given for Windows 98/Me and Windows NT 4.0. Procedures for Windows 2000/XP/Server 2003 are similar to those for Windows NT 4.0.

TO INSTALL THE E-MAIL PORT MONITOR ON WINDOWS COMPUTERS

1. **Open the EFI Fiery Mail Port folder on the User Software CD.**
2. **Double-click the Setup icon and follow the on-screen instructions.**

When installation is complete, you are ready to configure the connection for the e-mail port monitor.

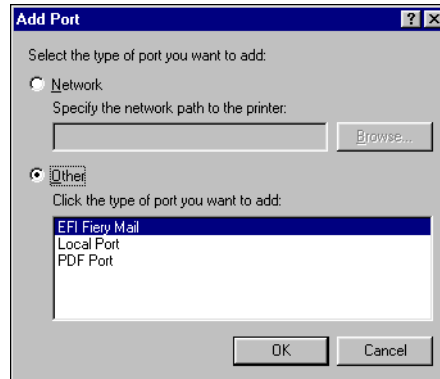
TO CONFIGURE THE CONNECTION FOR EFI FIERY MAIL PORT ON WINDOWS 98/ME

1. **Click Start, choose Settings, and then choose Printers.**
2. **In the Printers window, right-click the icon for the E-750 printer driver.**

For instructions on installing the printer driver, see “[Installing the PostScript or PCL printer driver for Windows 98/Me](#)” on page 1-2.

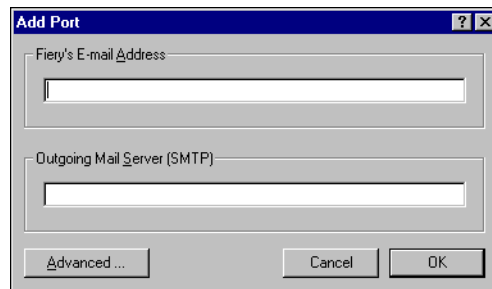
3. **Choose Properties, and click the Details tab.**

4. Click Add Port.



5. Click Other and select EFI Fiery Mail from the list of ports.

6. Click OK.



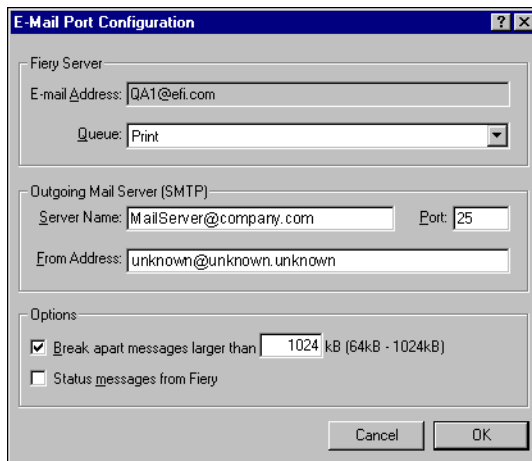
7. Enter the basic information required to set up the e-mail port.

Fiery's E-mail Address—Enter the e-mail address of the E-750.

Outgoing Mail Server—Enter the name or IP address of the SMTP server for the port monitor to use.

8. Click Advanced.

The E-Mail Port Configuration dialog box appears.



9. Enter the following information.

For Fiery Server:

E-mail Address—The e-mail address of the E-750.

Queue—The print connection on the E-750 that you want.

For Outgoing Mail Server (SMTP):

Server Name—The SMTP server to use.

From Address—The “from” address to insert in the e-mail.

For Options:

Break apart messages larger than—The maximum size of a single e-mail message is displayed. If a job exceeds this size, it is split into multiple messages, each not exceeding this size.

Status messages from E-750—When enabled, the Status option requests the E-750 to send status reports of the job via e-mail.

10. Click OK.

The name assigned to the EFI Fiery Mail Port appears in the Details tab of the E-750 printer driver.

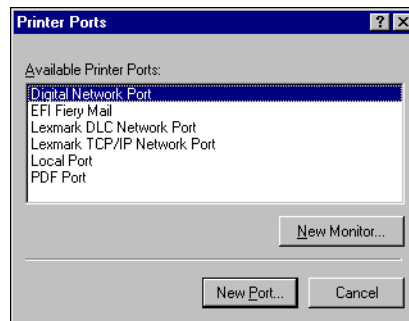
11. Click Apply, and then click OK.

The connection for the EFI Fiery Mail Port has now been configured.

**TO CONFIGURE THE CONNECTION FOR THE EFI FIERY MAIL PORT
ON WINDOWS NT 4.0**

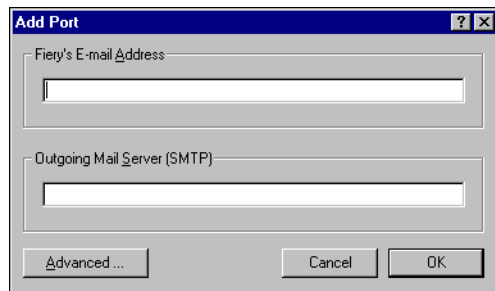
- 1. Click Start, choose Settings, and then choose Printers.**
- 2. In the Printers window, double-click the Add Printer icon and click Next.**
- 3. Specify printing using a Local printer and click Next.**
- 4. In the window displaying a list of ports, click Add Port.**

The Printer Ports dialog box is displayed, with the EFI Fiery Mail port listed as one of the available ports.



5. **Select EFI Fiery Mail and click New Port.**

The Add Port dialog box appears.

The 'Add Port' dialog box is shown. It has a title bar with a question mark and a close button. Inside, there are two text input fields: 'Fiery's E-mail Address' and 'Outgoing Mail Server (SMTP)'. At the bottom, there are three buttons: 'Advanced ...', 'Cancel', and 'OK'.

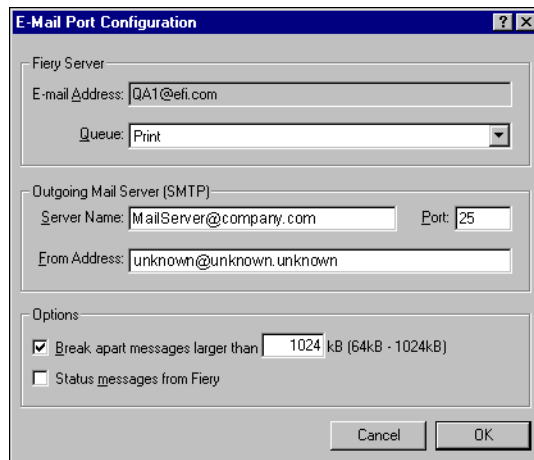
6. **Enter the basic information required to set up the e-mail port.**

Fiery's E-mail Address—Enter the e-mail address of the E-750.

Outgoing Mail Server—Enter the name or IP address of the SMTP server for the port monitor to use.

7. **Click Advanced.**

The E-Mail Port Configuration dialog box appears.

The 'E-Mail Port Configuration' dialog box is shown. It has a title bar with a question mark and a close button. Inside, there are several sections: 'Fiery Server' with an 'E-mail Address' field (containing 'QA1@efi.com') and a 'Queue' dropdown menu (set to 'Print'); 'Outgoing Mail Server (SMTP)' with 'Server Name' (containing 'MailServer@company.com'), 'Port' (containing '25'), and 'From Address' (containing 'unknown@unknown.unknown'); and 'Options' with two checkboxes: 'Break apart messages larger than' (checked, with a value of '1024' and '(64kB - 1024kB)') and 'Status messages from Fiery' (unchecked). At the bottom, there are 'Cancel' and 'OK' buttons.

8. Enter the following information.

For Fiery Server:

E-mail Address—The e-mail address of the E-750.

Queue—The print connection on the E-750 that you want.

For Outgoing Mail Server (SMTP):

Server Name—The SMTP server to use.

From Address—The “from” address to insert in the e-mail.

For Options:

Break apart messages larger than—The maximum size of a single e-mail message is displayed. If a job exceeds this size, it is split into multiple messages, each not exceeding this size.

Status messages from E-750—When enabled, the Status option requests the E-750 to send status reports of the job via e-mail.

9. Click OK.

The Add Printer Wizard dialog box appears.

10. Click Next and follow the instructions for installing the printer driver for your Windows computer.

Installing Fiery utilities

From the User Software CD, you can install the following Fiery utilities and user software:

- ColorWise Pro Tools
- Fiery Downloader
- Fiery Remote Scan (TWAIN Fiery Scan Module and Application)
- Fiery Printer Delete Utility
- EFI Fiery Mail Port (see [“Installing EFI Fiery Mail Port”](#) on page 1-47)
- Command WorkStation
- DocBuilder Pro (available as an option)

Includes Adobe Acrobat and PitStop, a plug-in for Acrobat.

NOTE: Do not attempt to install DocBuilder Pro from the User Software CD (by starting the setup.exe from the DBPro folder); it is automatically installed when you install Command WorkStation. Installing DocBuilder Pro from the User Software CD can cause unpredictable results. To use DocBuilder Pro, you must install Acrobat v5.0.5 and PitStop from the Fiery DocBuilder Pro option kit. To install Acrobat, see [“Adobe Acrobat”](#) on page 1-54. To install PitStop, see [“PitStop”](#) on page 1-55.

The Fiery utilities must be separately installed on each user’s computer. The installation of each utility is similar. Before you begin each installation, determine where you want to install each item on your hard disk. Otherwise, the software is placed by default in the Fiery folder inside the Programs folder, except for the Fiery Remote Scan TWAIN plug-in module.

The Command WorkStation installer also installs the Java files necessary to use Fiery Setup from Command WorkStation.

To use E-750 software as well as WebTools on Windows XP, you must install the JRE (Java Runtime Environment) on your computer. For more information on WebTools, see the [Configuration Guide](#) and the [Printing Guide](#).

To install the software on a Windows 2000 computer, you must have Service Pack 2 installed on your computer. If not, a warning message alerts you to install Service Pack 2.

The TWAIN Fiery Remote Scan Module installer automatically creates a folder named Twain_32 in the Windows folder on your hard disk, and then installs the Fiery Remote Scan plug-in module into the folder.

You access the Fiery Remote Scan plug-in from the TWAIN-compliant software using the TWAIN module. For details, see the *Printing Guide*.

TO INSTALL FIERY UTILITIES

1. **Open the appropriate folder for the software you want to install.**
2. **Double-click the Setup.exe icon.**
3. **Follow the instructions in the Setup dialog boxes to complete installation.**

NOTE: If the JRE (Java Runtime Environment) is not installed on your computer, the Command WorkStation installer will install the JRE first. After the JRE installation is finished, you should start the Command WorkStation installer again, in order to install Command WorkStation.

Adobe Acrobat

In Command WorkStation, the DocBuilder Pro feature and PitStop software plug-in work with Adobe Acrobat v5.0.5. To use DocBuilder Pro, you must install Adobe Acrobat v5.0.5, the PitStop plug-in, and Command WorkStation. Adobe Acrobat and PitStop are included on the Fiery DocBuilder Pro CD in an option kit.

NOTE: To use DocBuilder Pro, you must have the dedicated dongle installed to the parallel port on your computer. If the dongle is not installed, refer to the documentation packaged with the dongle.

For more information about Adobe Acrobat for Windows, see the Readme.pdf file on the Fiery DocBuilder Pro CD.

TO INSTALL ADOBE ACROBAT

1. **Insert the Fiery DocBuilder Pro CD in the CD-ROM drive.**
2. **Open the Acrobat folder, and double-click AutoPlay.exe.**
3. **Follow the on-screen instructions.**

All languages are installed.

PitStop

PitStop is a plug-in for Adobe Acrobat v5.0.5 for use with DocBuilder Pro. You must first install Adobe Acrobat v5.0.5 as described in the previous section. PitStop software is included on the Fiery DocBuilder Pro CD.

TO INSTALL PITSTOP

1. **On the Fiery DocBuilder Pro CD, double-click to open the PitStop folder.**
2. **Open the PitStop folder and choose the setup icon for the language you want to install.**

English, French, German, and Spanish are the languages that are supplied and are indicated by a two-letter identifier. For example, in the file name, pp_5.setup_de.exe, “de” represents German. The identifiers for the other languages are: us (English), fr (French), and es (Spanish).

3. **Double click the PitStop setup icon you want.**

The Welcome to Enfocus PitStop Setup dialog box appears,

4. **Click Next and then click Yes to the license agreement.**

The Information dialog box appears.

NOTE: Make sure to complete the Enfocus Certified PDF Personal Information form. Otherwise, the form will appear every time you launch Adobe Acrobat.

5. Click Next.

The Choose Destination Location dialog box appears.

PitStop will automatically select the correct location for installation.

6. Click Next.

Setup is complete.

7. Click Finish.

For more information, see the PitStop documentation in Adobe Acrobat under Help>Plug-in Help\Enfocus PitStop Professional.

Using Fiery utilities for the first time

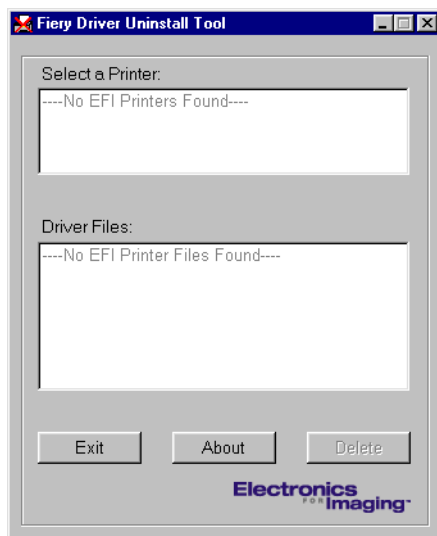
Before you can use the newly installed software, you must configure the connection to the E-750. Configuration of the Fiery utilities is similar.

Fiery Printer Delete Utility is installed and used locally, so connection to the E-750 is not required before using the software.

TO USE FIERY PRINTER DELETE UTILITY

1. Click Start, choose Programs, and then choose Fiery.**2. Click FieryPrinterDeleteUtility.**

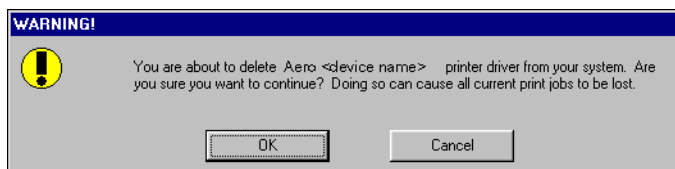
The Fiery Driver Uninstall Tool dialog box appears.



If any E-750 printer drivers are found on your computer, they are displayed.

3. **To delete any of the displayed printers, select the printer name and click Delete.**

A warning message appears.



4. **Click OK to delete the selected printer driver.**

A dialog box recommending that you restart your system appears after the printer driver is deleted.

5. **Click OK to restart, or, to delete another printer driver, click Cancel to return to the Fiery Driver Uninstall Tool dialog box. Restart when you finish deleting printer drivers.**

Configuring the connection for Fiery utilities

The first time you start one of the Fiery utilities, you must configure the connection to the E-750. Similar configuration is used for all Fiery utilities, so any change in one configuration affects all the other connections. Configuration for most Fiery utilities is described in the following procedure.

For configuration of specific Fiery utilities, see [“Configuring the connection for Command WorkStation”](#) on page 1-60.

BEFORE YOU BEGIN

- **Print the Configuration page from the E-750 Control Panel.**

This page contains information you need when configuring the connection, such as the IP address. For TCP/IP installations, you can use the DNS name of the E-750 instead of the IP address. Make sure the E-750 is already registered in a Domain Name Server (DNS) on your network. For more information, see your Windows system documentation.

TO CONFIGURE THE CONNECTION FOR FIERY UTILITIES

1. **Start the utility for which you want to configure a connection.**

For Fiery Remote Scan, start the supported TWAIN-compliant software.

For details, see the [Printing Guide](#).

2. **If the No Servers Configured dialog box appears, click OK.**

If the Choose Printer Device dialog box appears, click Add.

3. **Enter the appropriate information for the E-750.**

Nickname—Enter a name for the E-750. This name does not have to match the actual Server Name of the E-750.

NOTE: The nickname cannot contain any of the following seven characters:

[] _ " ' <space> <tab>

Protocol—Choose the type of network protocol you are using from the menu.

NOTE: Fiery utilities are not supported over IPX/SPX. Command WorkStation is supported on Windows computers over TCP/IP.

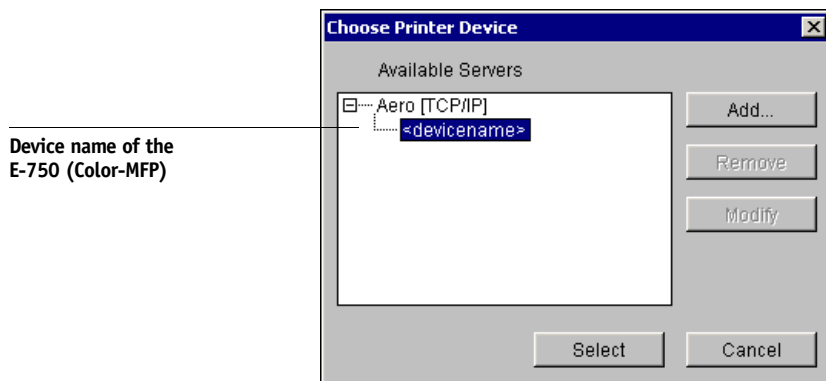
Server Name—Enter the IP address (or DNS name) of the E-750.

New Device—Enter the name of the device the E-750 is connected to: Color-MFP.

NOTE: Type Color-MFP exactly as shown because this term is case-sensitive.

4. When you have entered all the information, click **Add**.
5. With the device name (**Color-MFP**) selected in the **Devices** list, click **OK**.

The E-750 appears in the list of available servers. The first line of the entry displays the nickname you gave the server, followed by the protocol you chose. The second line displays the device name.



6. With the device name selected in the list of **Available Servers**, click **Select** to begin using the utility.

Modifying the configuration

Edit the configuration whenever there is any change to your E-750 server or network, such as a server name or IP address. If you change E-750 Setup information, do so before reconfiguring the connection.

TO MODIFY THE CONFIGURATION

1. To edit information for a E-750 in the list of available servers, select the E-750 by its nickname and click **Modify**.
2. Make the necessary changes in the **Modify Server Settings** dialog box and click **OK**.

3. To add a new E-750 to the list of available servers, click Add. Configure the Add New Server dialog box as outlined in steps 3 through 5 in the previous procedure.
4. To remove a E-750, select the E-750 by its nickname and click Remove.

NOTE: The nickname cannot be modified.

Configuring the connection for Command WorkStation

The first time you start Command WorkStation, you are prompted to configure the connection to the E-750.

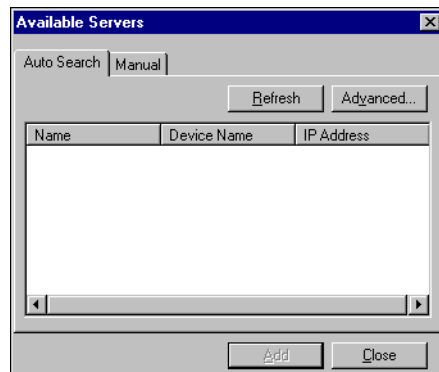
TO CONFIGURE THE CONNECTION FOR COMMAND WORKSTATION

1. **Print a Configuration page.**

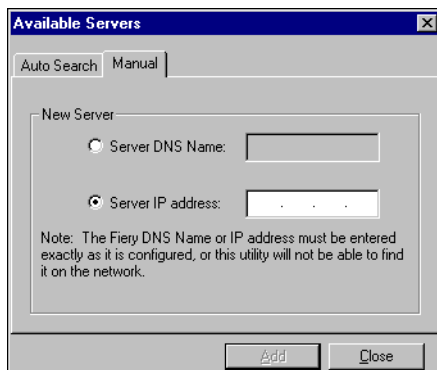
The information on this page helps you locate the E-750, if it is not on the same local subnet as your computer.

2. **Start Command WorkStation.**

The Available Servers dialog box appears. All servers found in the local subnet are displayed.

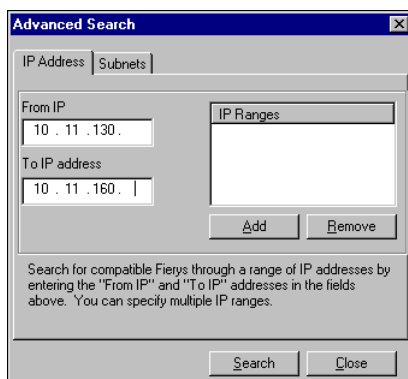


3. If no E-750 servers were found, click the Manual tab to search by DNS name or IP address. Click Add to add the server to the Available Servers list.

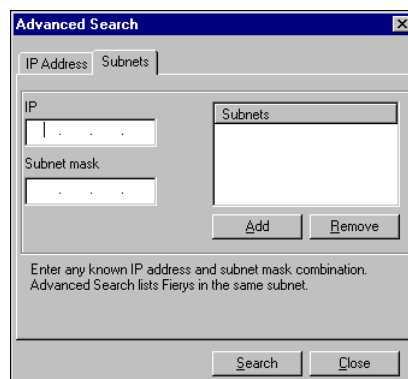


The "Available Servers" dialog box has two tabs: "Auto Search" and "Manual". The "Manual" tab is selected. It contains a "New Server" section with two radio buttons: "Server DNS Name:" and "Server IP address:". The "Server IP address:" option is selected. Below these is a note: "Note: The Fiery DNS Name or IP address must be entered exactly as it is configured, or this utility will not be able to find it on the network." At the bottom are "Add" and "Close" buttons.

4. Click the Auto Search tab and then click Advanced to search by either a range of IP addresses or the IP address and subnet mask.



The "Advanced Search" dialog box has two tabs: "IP Address" and "Subnets". The "IP Address" tab is selected. It contains two text input fields: "From IP" (containing "10 . 11 . 130 .") and "To IP address" (containing "10 . 11 . 160 ."). To the right is an "IP Ranges" list box. Below these are "Add" and "Remove" buttons. At the bottom are "Search" and "Close" buttons. A note at the bottom reads: "Search for compatible Fierys through a range of IP addresses by entering the 'From IP' and 'To IP' addresses in the fields above. You can specify multiple IP ranges."



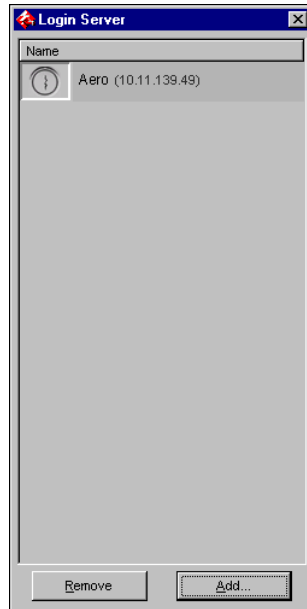
The "Advanced Search" dialog box has two tabs: "IP Address" and "Subnets". The "Subnets" tab is selected. It contains two text input fields: "IP" (containing ". . .") and "Subnet mask" (containing ". . ."). To the right is a "Subnets" list box. Below these are "Add" and "Remove" buttons. At the bottom are "Search" and "Close" buttons. A note at the bottom reads: "Enter any known IP address and subnet mask combination. Advanced Search lists Fierys in the same subnet."

5. Click Search.

All available servers appear in the Available Servers list.

6. Select the E-750 server you want to use and click Add.

The selected E-750 server appears in the Login Server dialog box.



7. Click the server name.

The Log In dialog box appears.



8. Select Administrator, Operator, or Guest and click Log In.

Your computer is connected to the server.

Modifying the configuration

Edit the configuration whenever there is any change to your E-750 server or network, such as a server name or IP address. If you change E-750 Setup information, do so before reconfiguring the connection.

TO MODIFY THE CONFIGURATION

1. **Start Command WorkStation.**

The Login Server window appears.

2. **Select the E-750 server for which you want to modify the configuration, and click Remove.**

The Available Servers dialog box appears.

3. **To add the modified E-750 server, follows steps 3 through 6 of the procedure, [“To configure the connection for Command WorkStation”](#) on page 1-60.**

To modify the connection to the E-750, you must remove the server from the Login Server list and follow the procedure for configuring the connection.

Installing color files from the User Software CD

You can copy additional color files from the User Software CD to your hard disk. Many of the files are PostScript files that you can download and print using Fiery Downloader.

Icm folder	ICM monitor settings file and a device profile specially designed for use with the E-750 and particular copier/printer models. For instructions on installing, see “Installing the ICM profiles on a Windows computer” on page 1-65.
Clrfiles folder (inside the English folder)	<p>Cmyk.ps, an 11-page, letter-size PostScript file to use for reference when defining CMYK colors in applications.</p> <p>Pantone.ps, a 19-page, letter-size PostScript file that indicates the closest equivalent of PANTONE coated colors that the E-750 and your copier/printer model can produce. The method used to print the Pantone.ps file differs depending on the Spot Color Matching setting. For more information, see the Printing Guide and the Color Guide.</p> <p>Rgb_01.doc, a file you can print from Microsoft Word 97 or later to view available RGB colors.</p> <p>Rgb_02.ppt, a file you can print from PowerPoint 6.0 or later to view available RGB colors.</p>
Calibrat folder (inside the English\Clrfiles folder)	Four PostScript files of color patches for obtaining measurements: Custom21.ps, Custom34.ps, Stand21.ps, and Stand34.ps. The numbers in the file names refer to the number of patches on the page. The Custom files allow you to download measurement patches that incorporate the copier/printer’s current calibration set. The Standard files allow you to download standard measurement patches that bypass the copier/printer’s current calibration set. For information on using these files, see the Color Guide .

NOTE: These files are provided for expert users and should not be used for day-to-day calibration.

Installing the ICM profiles on a Windows computer

The ICM profiles included in the Icm folder on the User Software CD are for use with ColorWise Pro Tools. You can also use the ICM profiles with applications that support ICC standards, such as Photoshop. For most ICC-aware applications, the files must be installed in a folder named Color in the System folder. For use with ColorWise Pro Tools, you can copy the files to a folder of your choice.

You can upload additional ICC profiles with the Profile Manager in ColorWise ProTools. For more information on uploading and using ICC profiles with ColorWise Pro Tools, see the [Color Guide](#).

TO INSTALL THE ICM PROFILES ON A WINDOWS COMPUTER

1. On the User Software CD, open the Icm folder.
2. If you are using Windows 98/Me, copy the profiles to the Windows\System\Color folder on your hard disk.

If you are using Windows NT or Windows 2000, copy the profiles to the Winnt\System32\Color folder on your hard disk.

NOTE: If a folder named “Color” does not exist in the System32 folder, create one and install the profiles into it.

If you are using Windows XP/Server 2003, right-click the profile you want and click Install Profile.

NOTE: The profiles are installed automatically to the Windows\System32\spool\drivers\color folder on your hard disk.

Loading the monitor settings file

The Efirgb.icm monitor settings file can be used in Photoshop, or other applications that support ICM profiles, to define a source color space for printing to the E-750.

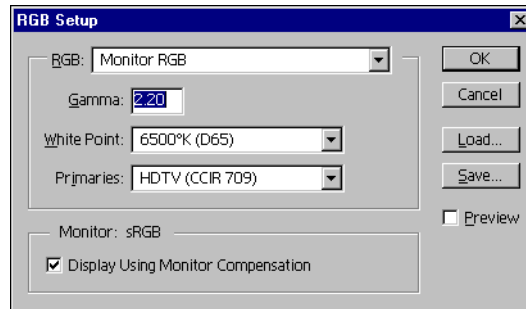
These instructions assume you have installed the ICM profiles included on the User Software CD. For more information, see the preceding section.

NOTE: The internal name of an ICC profile may vary slightly from its file name.

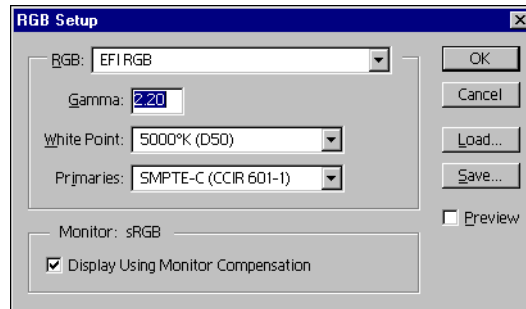
NOTE: If you use Fiery Remote Scan, install the monitor settings profile.

TO LOAD THE RGB WORKING SPACE PROFILE FOR PHOTOSHOP 5.X

1. Start Photoshop.
2. Choose Color Settings from the File menu and choose RGB Setup from the Color Settings submenu.
3. In the RGB Setup dialog box, click Load.



4. For Windows 98/Me, browse to the Windows\System\Color folder, select Efirgb.icm, and then click Load.



For Windows NT 4.0 or Windows 2000, browse to the Winnt\System32\Color folder, select Efirgb.icm, and then click Load.

For Windows XP, browse to the Windows\System32\spool\driver\color folder, select Efirgb.icm, and then click Load.

The Efirgb v1f file is displayed in the RGB menu of the RGB Setup dialog box.

5. Click OK.

For more information about ICM profiles, see your Photoshop documentation.

Loading the ICM copier/printer device profile

This ICM profile defines the target color space for printing to the copier/printer.

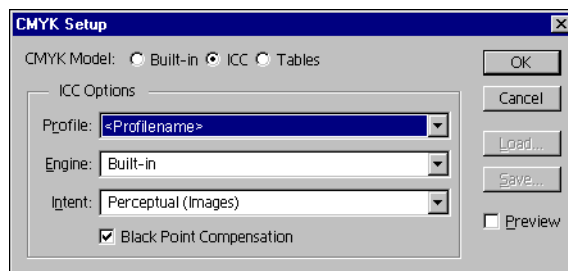
These instructions assume you have installed the ICM profiles included on the User Software CD. For more information, see [“Installing the ICM profiles on a Windows computer”](#) on page 1-65.

NOTE: The internal name of an ICC profile may vary slightly from its file name.

TO LOAD THE ICM COPIER/PRINTER DEVICE PROFILE IN PHOTOSHOP 5.X

1. Start Photoshop.
2. Choose Color Settings from the File menu and choose CMYK Setup from the Color Settings submenu.
3. In the CMYK Setup dialog box, choose ICC as the CMYK color model.
4. Select the profile that corresponds to the E-750 from the Profile menu.

NOTE: For more information on using profiles, see the [Color Guide](#).



5. **Click OK.**

For more information about ICC profiles, see your Photoshop documentation.

Loading monitor settings files and ICM device profiles in Photoshop 6.x

Once you have installed the Efirgb.icm monitor settings file and the ICM device profile for the E-750, they can be loaded at the same time in Photoshop 6.x.

**TO LOAD THE MONITOR SETTINGS FILE AND ICM DEVICE PROFILE
IN PHOTOSHOP 6.X**

1. **Start Photoshop.**
2. **Choose Color Settings from the Edit menu and select Advanced Mode in the Color Settings dialog box.**
3. **Choose EFI RGB from the RGB menu.**
4. **Choose the profile that corresponds to the E-750 from the CMYK menu.**

NOTE: For more information on using profiles, see the *Color Guide*.

5. **Click OK.**

For more information, see your application's documentation.

Installing the printer description files for Windows

The User Software CD contains printer description files for popular Windows applications. Adobe Pagemaker 5.0, 6.x, and 7.0 do not support automatic installation of printer description files from the Printers or Printers and Faxes Control Panel. To make the E-750 available in the Print and Page Setup dialog boxes of this application, copy printer description files to the appropriate location.

TO COPY THE PRINTER DESCRIPTION FILES

1. **On the User Software CD, open the English\Prntdrv\Ps_drvr folder. Select the folder that corresponds to the system you are using.**

For Windows 98/Me, select English\Prntdrv\Ps_drvr\Win_9x_ME.

For Windows NT 4.0, select English\Prntdrv\Ps_drvr\Win_NT4x.

For Windows 2000/XP, select English\Prntdrv\Ps_drvr\Win_2K_XP.

2. **Copy the printer description file for your E-750 to the appropriate location.**

If you use	Copy this file	To this location
PageMaker 5.0 or later	EF3T45E1.PPD EF3T45U1.PPD	For PageMaker 5.0, \ALDUS\USENGLSH\PPD4 For PageMaker 6.0, \PM6\RSRC\USENGLSH\PPD4 For PageMaker 6.5, \PM65\RSRC\USENGLSH\PPD4 For PageMaker 7.0, \PM7\RSRC\USENGLSH\PPD4

1

1-70

Installing User Software on a Windows Computer

Chapter 2: Installing User Software on a Mac OS Computer

The general steps for installing the E-750 user software and setting up printing on a Mac OS computer are as follows:

- Install the PostScript printer driver and printer description file.
- Set up the E-750 in the Chooser (Mac OS 9 or Mac OS X Classic mode) or in the Print Center (Mac OS X 10.2.x Native mode).
- Install the Fiery utilities (Fiery Remote Scan, ColorWise Pro Tools, Fiery Downloader, Command WorkStation LE, and Fiery Spooler).
- Configure the connection for Fiery utilities.
- Install the printer and screen fonts.
- Install the ColorSync profiles.
- Install additional color reference and application-specific files.

In addition to using the User Software CD, you can download printer drivers from the E-750 with the Installer WebTool (if the site administrator has enabled Internet access to the E-750). For instructions, see [page 3-2](#).

Once you download the printer files, the installation process is identical to installing from the User Software CD.

Setting up the E-750 as a PostScript printer

To set up the E-750 as a PostScript printer, you must install the PostScript printer driver and the printer description file that corresponds to your copier/printer. The PostScript printer driver and printer description files are provided on the User Software CD. Printer drivers provide a way to communicate information on print jobs between your applications, the E-750, and any other PostScript printer connected to your computer.

When you install printer files from the User Software CD or printer files downloaded using the Installer WebTool, use the following procedures.

Setting up Mac OS 9.x printer drivers and printer description files

Instructions that follow are for Mac OS 9.x and Mac OS X Classic Mode.

TO INSTALL THE ADOBEPS PRINTER DRIVER AND PRINTER DESCRIPTION FILE FOR MAC OS 9.X

1. **Quit all open applications.**

After you have completed installation, restart your computer.

2. **On the User Software CD, open the English: Printer Driver folder.**

If you are installing from files you downloaded using the Installer WebTool, open the Printer Driver folder on your hard disk.

3. **Double-click the AdobePS Installer icon.**

4. **Follow the on-screen instructions.**

The AdobePS Installer installs the Adobe PostScript printer driver, and the printer description file that corresponds to the E-750.

NOTE: If you operate the E-750 in a copy shop, quick print shop, or service bureau, provide your customers with copies of the printer driver, printer description file, or ICC profiles you use for printing images, as well as any relevant documentation. This ensures that jobs they create and print to files are properly formatted for printing to the E-750.

Setting up the E-750 in the Chooser

After you install the Adobe PostScript printer driver and printer description file (see [page 2-1](#)), you must set up the E-750 in the Chooser in order to take full advantage of its features. This section describes how to set up the E-750 with the AdobePS printer driver.

TO SET UP THE E-750 IN THE CHOOSER

1. **Select Chooser from the Apple menu.**

Make sure AppleTalk is set to Active.

2. **Select the correct AppleTalk Zone, if necessary.**

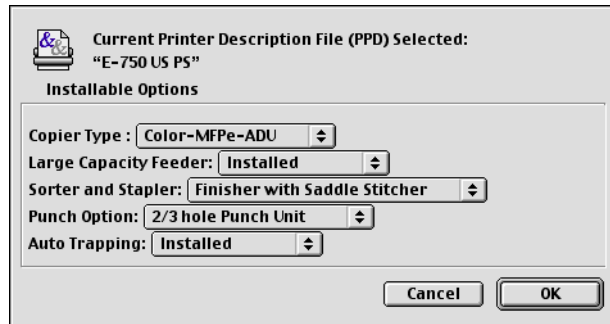
3. Click the AdobePS icon.

NOTE: Only the print connections (Direct, Hold, and Print) that have been enabled in Setup appear in the Chooser.

4. Select a E-750 connection from the “Select a PostScript Printer” list and click Create.

Select the correct printer description file for your printer.

NOTE: You must set up each print connection separately. Repeat this step for all enabled connections.

5. With the same printer selected, click Setup, and then click Configure.**6. In the Installable Options dialog box, select the appropriate settings from the menus and click OK.**

Copier Type—Color-MFPe, Color-MFPe-ADU

Large Capacity Feeder—Not Installed, Installed

Sorter and Stapler—Not Installed, Finisher with Saddle Stitcher, Finisher with Stapler

Punch Option—Not installed, 2 hole Punch Unit, 2/3 hole Punch Unit, 4 hole Punch Unit (F), 4 hole Punch Unit (S)

NOTE: Select 2/3 hole Punch Unit to use the Punch Option.

Auto Trapping—Not Installed, Installed

7. Close the Chooser.

Setting up Mac OS X printer drivers and printer description files

Instructions that follow are for Mac OS X v.10.2.x.

The User Software CD contains the following software for Mac OS X:

- PPD Installer—this application installs the PostScript Printer Description files (PPDs) necessary to print from Mac OS X v.10.2.x.
- Language folders—these folders contain copies of the files that will be installed by the PPD Installer. It is not necessary to open these folders or install them on your computer; the appropriate files will be installed by the PPD Installer.

TO INSTALL THE PRINTER DESCRIPTION FILES FOR MAC OS X

1. **Quit all open applications.**
2. **Make sure that Print Center is not running on your computer.**

Print Center updates the list of available printers when it restarts; if a printer description file is added while Print Center is running, you cannot select the associated printer model until you restart Print Center.
3. **Insert the User Software CD into the CD-ROM drive.**
4. **Open the Printer Driver folder inside the OSX folder on the User Software CD.**
5. **Click the PPD Installer icon to start installing printer description files.**
6. **Follow the on-screen instructions.**

The PPD Installer installs the printer description files that correspond to the E-750. The table below shows where the files are installed for each language.

Language	Location of files
Dutch	<i>Rootdrivename</i> :Library:Printers:PPDs:Contents:Resources:nl.lproj
English	<i>Rootdrivename</i> :Library:Printers:PPDs:Contents:Resources:en.lproj
French	<i>Rootdrivename</i> :Library:Printers:PPDs:Contents:Resources:fr.lproj
German	<i>Rootdrivename</i> :Library:Printers:PPDs:Contents:Resources:de.lproj

Language	Location of files
Italian	<i>Rootdrivename:Library:Printers:PPDs:Contents:Resources:it.lproj</i>
Japanese	<i>Rootdrivename:Library:Printers:PPDs:Contents:Resources:ja.lproj</i>
Portuguese	<i>Rootdrivename:Library:Printers:PPDs:Contents:Resources:pt.lproj</i>
Spanish	<i>Rootdrivename:Library:Printers:PPDs:Contents:Resources:es.lproj</i>
Swedish	<i>Rootdrivename:Library:Printers:PPDs:Contents:Resources:sv.lproj</i>

7. After you have completed installation, restart your computer.

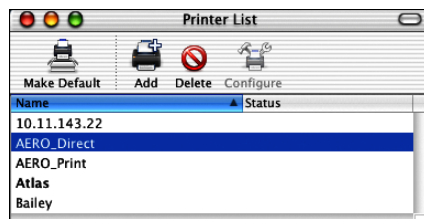
Setting up the E-750 in the Print Center

After you install the printer description file (see [page 2-1](#)), you must set up the E-750 in the Print Center in order to take full advantage of its features. This section describes how to set up the E-750 and configure installable options.

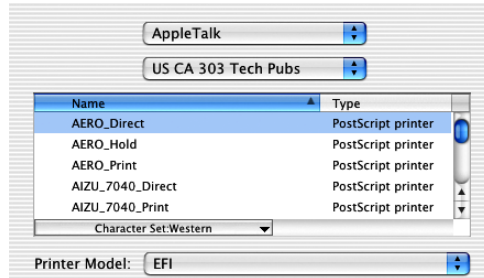
TO SET UP THE E-750 IN THE PRINT CENTER

1. Start Print Center.

Click the Print Center icon. Or you can select Applications from the Go menu, select Utilities, and then select Print Center.



2. Click Add in the Printer List window.
3. Select AppleTalk or IP printing in the pop-up menu.



For AppleTalk, choose the AppleTalk Zone and choose the name of the E-750.

For IP Printing, enter the IP address or DNS name for the E-750 in the Printer's Address field. Clear the Use default queue on server field. In the Queue Name field, enter print or hold. Make sure that LPR printing and the specified queue are enabled on the E-750. For more information about configuring TCP/IP printing, see the [Configuration Guide](#).

4. For Printer Model, select the appropriate file for your language and E-750 using one of the following methods:

Select a manufacturer name to display the list of all printer models for that manufacturer. Scroll through the list to select your copier/printer model name. If you cannot find your printer model in the list for your copier/printer manufacturer, look in the Fiery folders.

You can also choose Auto Select to have the system select the correct file for your printer. If there is more than one file that corresponds to your printer, a dialog box will display a list of all valid files. If there are multiple files with identical names, cancel the Auto Select and choose the correct file from the Printer Model list as described above.

5. Click Add.

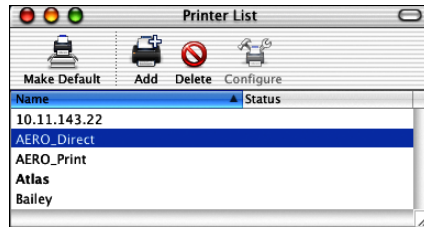
For more information about adding printers, see your Mac OS X documentation.

TO CONFIGURE INSTALLABLE OPTIONS

1. Start Print Center.

Click the Print Center icon. Or you can select Applications from the Go menu, select Utilities, and then select Print Center.

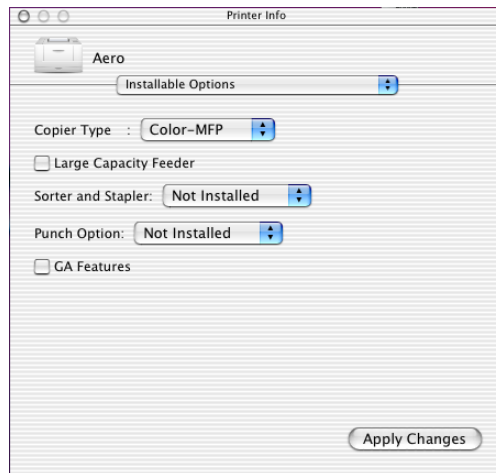
2. Select your printer in the Printer List.



3. Choose Show Info from the Printer menu.

4. Select Installable Options in the pop-up menu.

5. In the Printer Info dialog box, select the appropriate settings from the menus.



Copier Type—Select which copier/printer is installed.

Large Capacity Feeder—Not Installed, Installed

Sorter and Stapler—Not Installed, Finisher with Saddle Stitcher, Finisher with Stapler

Punch Option—Not installed, 2 hole Punch, 2/3 hole Punch, 4 hole Punch (F), 4 hole Punch (S)

GA Features—Not Installed, Installed

6. Click Apply Changes.

Installing E-750 software and fonts

The Mac OS installers function essentially the same for each type of software. Before you begin each installation, determine where you want to install each item on your hard disk. Otherwise, the software is placed by default as follows:

- ColorSync profiles—ColorSync Profiles folder.
If you are using ColorSync 2.5, install the profiles into the ColorSync Profiles folder inside the System folder. If you are using an earlier version of ColorSync, install the profiles to the ColorSync Profiles folder inside the System:Preferences folder. The printer profile can be moved to a folder of your choice.
- Fiery Spooler, Fiery Downloader, Command WorkStation LE, and ColorWise Pro Tools—"Fiery" folder.
- Fiery Remote Scan—Supported TWAIN-compliant application software Plug-Ins folder
- Fonts—System folder:Fonts folder.

For instructions on installing Fonts, see ["Fonts"](#) on page 2-19.

TO INSTALL MAC OS SOFTWARE

- 1. Insert the User Software CD in the CD drive and double-click the Installer icon of the item you want to install, then follow the instructions in the installer dialog boxes.**

- 2. If prompted, click Quit to close the software installer.**

In order to use ColorWise Pro Tools, or Fiery Spooler, you must have Mac OS Runtime for Java (MRJ) installed on your computer.

If you do not have the appropriate MRJ installed, the installer automatically initiates the MRJ installation process.

- 3. To Install MRJ, follow the instructions in the installer dialog boxes.**

Installing MRJ on your computer

In order to use ColorWise Pro Tools, or Fiery Spooler on Mac OS 9, you must have Mac OS Runtime for Java (MRJ) installed on your computer.

If you do not have MRJ installed, the ColorWise Pro Tools, or Fiery Spooler installer automatically initiates the MRJ installation process.

NOTE: The respective installer prompts the MRJ installation from the User Software CD.

TO INSTALL MAC OS RUNTIME FOR JAVA ON MAC OS 9

1. **Open the MRJ folder on the User Software CD and double-click Installer.**
2. **Read the Apple Computer Inc. License Agreement and click Agree to install the software.**
3. **Click Install.**

Some files are installed.

4. **Click Quit.**

You are now ready to configure the ColorWise Pro Tools and Fiery Spooler connections to the E-750.

We recommend that you use the version of MRJ provided on the User Software CD with the E-750 software.

If you have a newer version of MRJ already installed on your computer and experience some difficulty using the E-750 software, either remove or relocate the MRJ files currently installed and reinstall the version of MRJ provided on the User Software CD, using the following procedure.

TO UNINSTALL MAC OS RUNTIME FOR JAVA ON MAC OS 9

1. **Locate the System Folder on your hard disk.**
2. **Inside the Extensions folder, locate MRJ Libraries and remove it or move it to another folder.**

NOTE: If you find the “MRJ Enabler” file under Extensions, remove it or move it to another folder.

3. On Mac 9.x, locate the Apple Extras folder inside the Applications folder on your hard disk.
4. Inside the Apple Extras folder, locate Mac OS Runtime for Java, and remove it or move it to another folder.
5. Restart your computer.

Configuring a connection for ColorWise Pro Tools

The first time you use ColorWise Pro Tools, you are prompted to configure a connection to the E-750.

NOTE: ColorWise Pro Tools are supported only over TCP/IP networks.

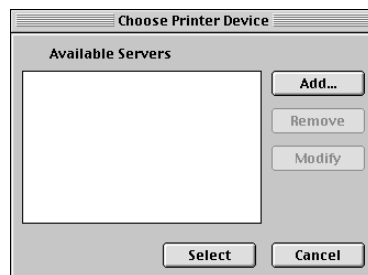
BEFORE YOU BEGIN

- Print the Configuration page from the Control Panel and note the IP address of the E-750.

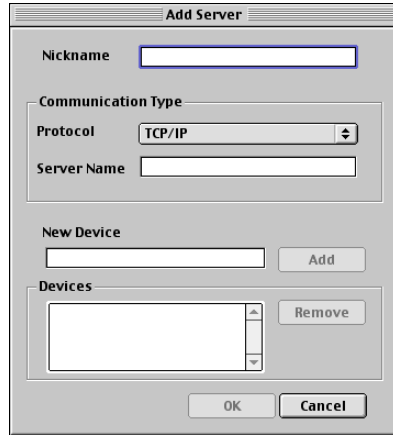
TO CONFIGURE A CONNECTION FOR COLORWISE PRO TOOLS

1. Start the utility by double-clicking its icon.

The Choose Printer Device dialog box appears.



2. If you have previously configured a connection to the E-750, you are ready to use ColorWise Pro Tools. If you have not configured a connection, click Add.

The image shows a dialog box titled "Add Server". It contains several input fields and buttons. At the top is a "Nickname" text box. Below it is a "Communication Type" section containing a "Protocol" dropdown menu (set to "TCP/IP") and a "Server Name" text box. Further down is a "New Device" section with a text box and an "Add" button. Below that is a "Devices" section with a list box (currently empty) and a "Remove" button. At the bottom are "OK" and "Cancel" buttons.

3. Enter the appropriate information for the E-750.

Nickname—Enter a name for the E-750. It does not have to match the actual server name of the E-750.

NOTE: The nickname cannot contain any of the following seven characters:
[] _ " ' <space> <tab>

Protocol—TCP/IP is the only supported network protocol, so no selection is necessary.

Server Name—Enter the IP address (or DNS or hosts name) of the E-750.

New Device—Enter the name of the device the E-750 is connected to: Color-MFP. This device name appears in the Printer Setup section of the Configuration page.

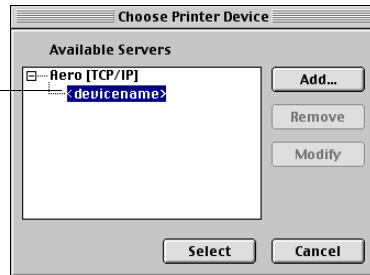
NOTE: The device name is case sensitive; enter it *exactly* as it appears here.

4. When you have added all the information, click Add.
5. With the device name selected in the Devices list, click OK.

The E-750 appears in the list of available servers. The first line of the entry displays the nickname you gave the server, followed by the protocol. The second line displays the device name.

6. With the device name selected in the list of Available Servers, click Select to begin using ColorWise Pro Tools.

Device name of the E-750



Modifying the configuration

Edit the configuration whenever there is any change in your original configuration, such as a change of IP address. Change the specific E-750 Setup information before using the following procedure to configure the connection.

TO MODIFY THE CONFIGURATION

1. To edit information for a E-750 in the list of available servers, select the E-750 by its nickname and click Modify. Edit information in the Modify Server Settings dialog box as necessary, and click OK.
2. To add a new E-750 to the list of available servers, click Add. Configure the Add New Server dialog box as outlined in steps 3 through 5 in the preceding procedure.
3. To remove a E-750 from the list of available servers, select the E-750 by its nickname and click Remove.

Configuring a connection for Fiery Spooler

Before you begin, print a Configuration page from the Control Panel and note the IP address of the E-750.

TO CONFIGURE THE CONNECTION FOR FIERY SPOOLER

1. **Start the utility by double-clicking its icon.**

The Chooser dialog box appears.

2. **Click Option.**

3. **Click Add.**

4. **Enter the appropriate information for the E-750.**

Name—Enter the IP address (or DNS name) of the E-750.

New Device—Enter the name of the device that the E-750 is connected to: Color-MFP.
This device name appears in the Printer Setup section of the Configuration page.

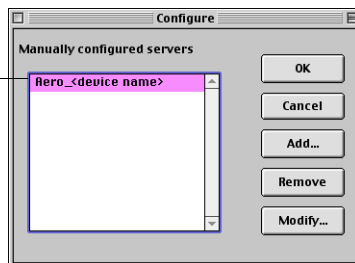
NOTE: Type Color-MFP exactly as shown; this term is case-sensitive.

5. **When you have entered all the information, click Add.**

6. **With the device name selected, click OK.**

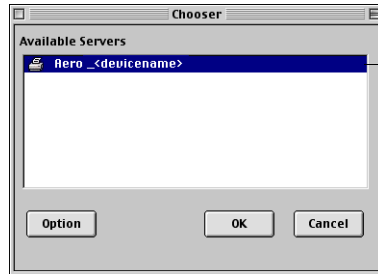
The E-750 appears in a list of configured servers.

E-750 name and device name
(Color-MFP)



7. Click OK in the Configure dialog box.

The E-750 appears in a list of available servers.



E-750 name and device name

8. With the E-750 selected in the list of available servers, click OK to begin using Fiery Spooler.

Modifying the configuration

Edit the configuration whenever there is any change to your E-750 or network, such as an IP address or device change. Change the specific E-750 Setup information before configuring the connection.

TO MODIFY THE CONFIGURATION

1. In the Chooser dialog box, click Option.
2. To edit information for a E-750, select the E-750 by its IP address or DNS name and click Modify. Edit information in the Settings dialog box as necessary, and click OK.
3. To add a new E-750, click Add. Configure the Settings dialog box as outlined in steps 4 through 6 in the preceding procedure.
4. To remove a E-750, select the E-750 by its IP address or DNS name, and click Remove.

The list of available servers reflects the modifications you have made.

Configuring a connection for Fiery Downloader

When you start Fiery Downloader, you must specify the connection to the E-750.

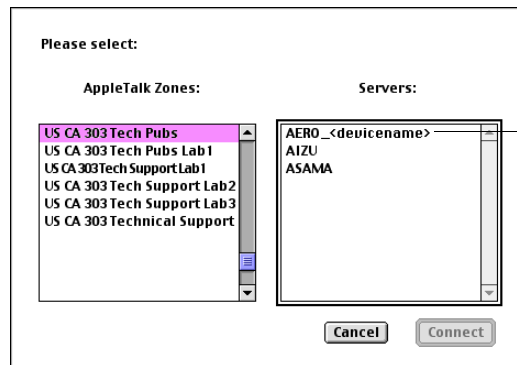
BEFORE YOU BEGIN

- Print the Configuration page from the Control Panel and note the AppleTalk zone of the E-750.

TO SPECIFY A E-750 CONNECTION

1. Double-click the Fiery Downloader icon.
2. Select the AppleTalk zone in which the E-750 is located from the AppleTalk Zones list.

The available servers appear in the Servers list.

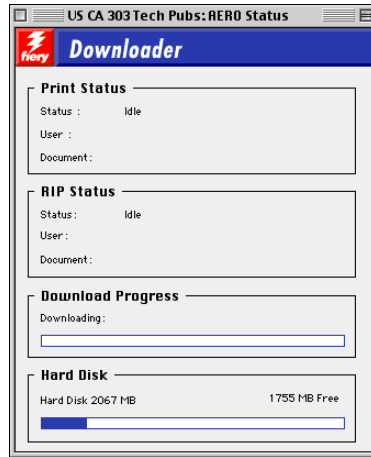


E-750 name and device name
(Color-MFP)

3. Select the E-750 in the Servers list.

4. Click Connect.

The Fiery Downloader dialog box appears.



For information on how to use Fiery Downloader, see the [Printing Guide](#).

Configuring the connection for Command WorkStation LE for Mac OS X

The first time you start Command WorkStation LE, you are prompted to configure the connection to the E-750.

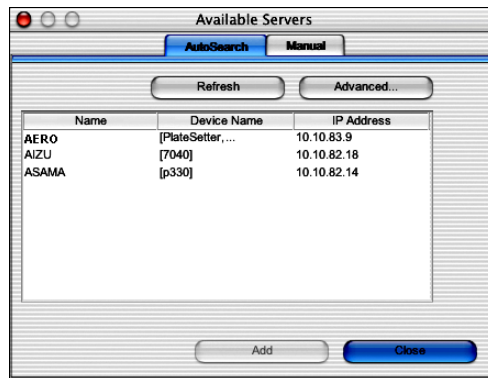
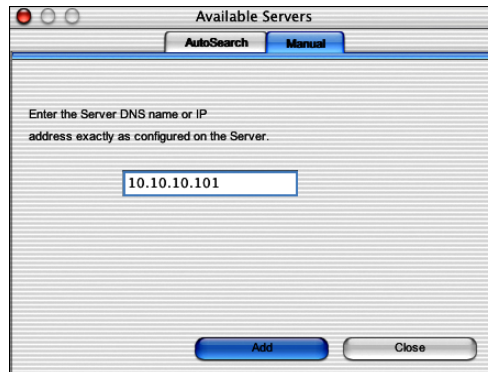
BEFORE YOU BEGIN

- **Print the Configuration page from the Control Panel and note the IP address of the E-750.**

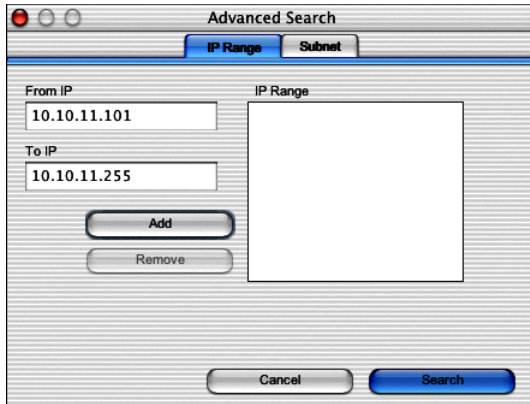
TO CONFIGURE THE CONNECTION FOR COMMAND WORKSTATION LE**1. Start Command WorkStation LE.**

The Available Servers dialog box is displayed. All servers found in the local subnet are displayed.

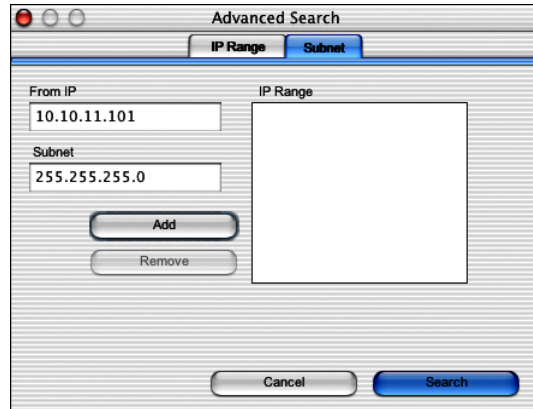
NOTE: The device name for the E-750 is Color-MFP.

**2. If no E-750 servers were found, click the Manual tab to search by DNS name or IP address. Click Add to add the server to the Available Servers list.**

3. If no E-750 servers were found, click the Auto Search tab and then click Advanced to search by either a range of IP addresses or the IP address and subnet mask.



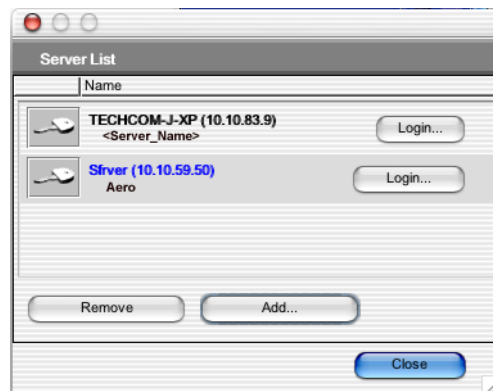
The 'Advanced Search' dialog box has two tabs: 'IP Range' (selected) and 'Subnet'. It contains two text input fields: 'From IP' with the value '10.10.11.101' and 'To IP' with the value '10.10.11.255'. Below these fields are 'Add' and 'Remove' buttons. To the right is a large empty rectangular box labeled 'IP Range'. At the bottom are 'Cancel' and 'Search' buttons.



The 'Advanced Search' dialog box has two tabs: 'IP Range' and 'Subnet' (selected). It contains two text input fields: 'From IP' with the value '10.10.11.101' and 'Subnet' with the value '255.255.255.0'. Below these fields are 'Add' and 'Remove' buttons. To the right is a large empty rectangular box labeled 'IP Range'. At the bottom are 'Cancel' and 'Search' buttons.

4. Click Search.
5. Select the E-750 server you want to use and click Add.

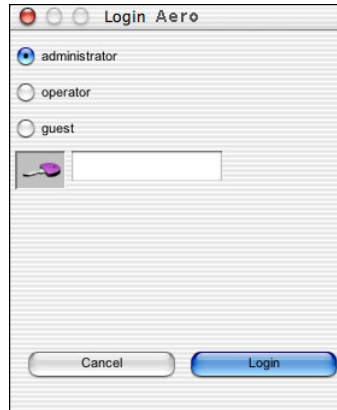
The selected E-750 server is displayed in the Login Server dialog box.



The 'Server List' dialog box displays a list of servers. The first server is 'TECHCOM-J-XP (10.10.83.9)' with a '<Server_Name>' label and a 'Login...' button. The second server is 'Silver (10.10.59.50)' with the label 'Aero' and a 'Login...' button. At the bottom are 'Remove', 'Add...', and 'Close' buttons.

6. Click the server name.

The Log In dialog box is displayed.



7. Select a key for Administrator, Operator, or Guest and click Log In.

8. If prompted, enter the password for Administrator or Operator.

Your computer is connected to the server.

To modify the Command WorkStation LE connection to the E-750, you must remove the server from the Login Server list and follow the procedure for configuring the connection.

Fonts

The Fonts installer on the User Software CD includes screen and printer fonts that correspond to the 136 built-in PostScript printer fonts on the E-750. The Font installer copies both types of fonts to the System:Fonts folder on your hard disk. To be available to applications, the screen fonts must remain in the System:Fonts folder. You can copy the printer fonts to a folder of your choice.

NOTE: In the System:Fonts folder, when displayed by Kind, screen fonts appear as type “Font Suitcase” and PostScript printer fonts appear as type “PostScript font”.

TO INSTALL SCREEN AND PRINTER FONTS

1. **On the User Software CD, double-click the Fonts icon to start the Fonts installer.**
2. **Click Install and restart your computer.**

By default, the fonts are installed to the System folder:Fonts folder on your hard disk.

If you have any applications open, you must quit and restart them before the newly installed screen fonts are available.

Installing color files from the User Software CD

You can copy additional color files from the User Software CD to your hard disk. Many of the files are PostScript files you can download and print using Fiery Downloader.

The User Software CD contains the following color files:

ICC profiles (inside the ColorSync folder)	Install the ICC profiles into the ColorSync Profiles folder inside the System folder.
Color Files folder (inside the English folder)	<p>CMYK Color Reference.ps, an 11-page, letter-size PostScript file to use for reference when defining CMYK colors in applications.</p> <p>PANTONE Book.ps, a 19-page, letter-size PostScript file that indicates the closest equivalent of PANTONE coated colors that the E-750 and your particular copier/printer model can produce. The method used to print the PANTONE Book.ps file differs depending on the Spot Color Matching setting. For more information, see the Printing Guide and the Color Guide.</p> <p>RGB page 01, a file you can print from Microsoft Word 97 or later to view available RGB colors.</p> <p>RGB page 02, a file you can print from PowerPoint 6.0 or later to view available RGB colors.</p>

Calibration folder (inside Color Files folder) Four measurements files of color patches: custom21.ps, custom34.ps, standard21.ps and standard34.ps. The numbers in the file names refer to the number of patches on the page. The Custom files are provided to allow you to download measurement patches that incorporate the copier's current calibration set. The Standard files are provided to allow you to download standard measurement patches that bypass the copier/printer's current calibration set. For information on using these files, see the [Color Guide](#).

These files are provided for expert users and should not be used for day-to-day calibration.

Loading ICC profiles

The ICC profiles installed are used with ColorWise Pro Tools and applications that support ICC standards.

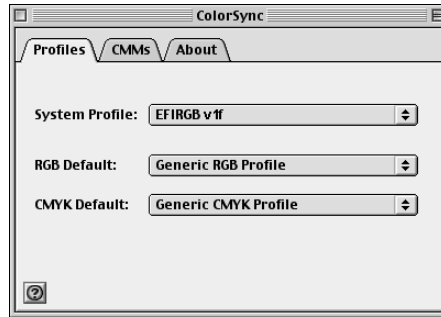
These instructions assume that you have already installed the ICC profiles included on the User Software CD inside the ColorSync folder. For more information, see [“Installing color files from the User Software CD”](#) on page 2-20.

NOTE: The internal name of an ICC profile may vary slightly from its file name.

The following procedure describes installing the ICC profiles with ColorSync 4.0. For more information about ColorSync, see your application's documentation.

TO SET THE COLORSYNC SYSTEM PROFILE

1. Choose Control Panels:ColorSync from the Apple Menu.
2. Select EFIRGB ICC v1f from the System Profile list.



When selected as the ColorSync system profile, EFIRGB ICC v1f sets the optimal source color space for printing to the E-750. The color space set by the EFIRGB ICC v1f profile is the same as that set by the EFIRGB setting of the RGB Source Profile print option.

NOTE: The RGB Source Profile print option setting overrides the ColorSync system profile setting.

3. Close the ColorSync dialog box.

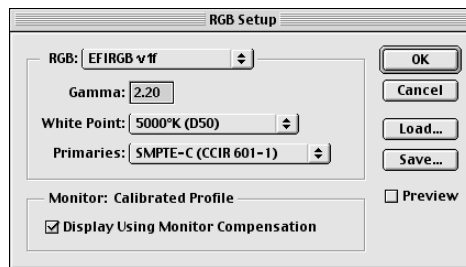
For more information about ICC profiles, see your Photoshop documentation.

Loading the monitor settings file

The EFIRGB ICC monitor settings file can be used in Photoshop or other applications that support ICC profiles to define a source color space for printing to the E-750.

TO LOAD THE MONITOR SETTINGS FILE IN PHOTOSHOP 5.X

1. Start Photoshop.
2. Choose Color Settings from the File menu, and choose RGB Setup from the Color Settings submenu.
3. In the RGB Setup dialog box, click Load.
4. Browse to the System: Preferences: ColorSync Profiles folder, select the EFIRGB ICC file, and then click Open.



NOTE: If you are using ColorSync 2.5, the ColorSync profile is located in System Folder:ColorSync Profiles.

The EFIRGB v1f file appears as the selection.

5. Click OK.

Loading the ICC copier/printer profile

The ICC copier/printer profile enables RGB-to-CMYK conversions that are specific to the kind of copier/printer you are using.

TO LOAD THE ICC COPIER/PRINTER PROFILE IN PHOTOSHOP 5.X

1. **Start Photoshop.**
2. **Choose Color Settings from the File menu and choose CMYK Setup from the Color Settings submenu.**
3. **In the CMYK Setup dialog box, choose ICC as the CMYK color model.**
4. **Select the profile that corresponds to the E-750 from the Profile menu.**
NOTE: For more information on using profiles, see the [Color Guide](#).
5. **Click OK.**

For more information about ICC profiles, see your Photoshop documentation.

Loading monitor settings and the ICC device profile in Photoshop 6.x/7.x

In Photoshop 6.x and 7.x, you can load the monitor settings file and the ICC device profile at the same time.

TO LOAD THE MONITOR SETTINGS FILE AND THE ICC DEVICE PROFILE IN PHOTOSHOP 6.X/7.X

1. **Start Photoshop.**
2. **Choose Color Settings from the Edit menu and then choose Advanced Mode.**
3. **Choose EFI RGB from the RGB menu.**
4. **Choose the profile that corresponds to the E-750 from the CMYK menu.**
NOTE: For more information on using profiles, see the [Color Guide](#).
5. **Click OK.**

For more information, see your Photoshop documentation.

Chapter 3: Downloading Installers with Fiery WebTools

Fiery WebTools allow you to manage your E-750 remotely from the Internet or from your company's intranet. The E-750 has its own home page, from which you can select a variety of functions.

For more information on using Fiery WebTools, see the [Printing Guide](#).

Setting up Fiery WebTools

In order for network users to access and use Fiery WebTools, you must set specific E-750 options in Network Setup and Printer Setup. You also must prepare each user's computer to communicate with the E-750 over the Internet or intranet.

For more information about Network Setup and Printer Setup, see the [Configuration Guide](#).

TO SET UP CLIENT WORKSTATIONS TO USE FIERY WEBTOOLS

1. **Enable TCP/IP networking.**
2. **Make sure the workstation has a valid, unique IP address.**
3. **Make sure a supported Internet browser is installed on the computer.**
For more information on supported browsers, see the [Quick Start Guide](#).
4. **Make sure Java is enabled in your Internet browser.**

For more information on setting up the E-750 and the network, see the [Configuration Guide](#).

Using the Fiery WebTools Installer

The Installer WebTool allows you to download installers for printer drivers directly from the E-750 to your computer.

TO DOWNLOAD PRINTER DRIVER FILES WITH THE INSTALLER WEBTOOL

1. Start your Internet or intranet browser and enter the DNS name or IP address of the E-750.
2. Click the WebTools button.
3. Select a login level, enter a password if required, and click OK.

No password is required to log in as Guest. If the Administrator has configured Guest access, any user has full access to the Installer WebTool while logged in as Guest.

4. Click Installer.



5. Under the name of your operating system, click the name of the item you want to install.

6. For installation of printer drivers, continue with the following instructions.

A dialog box appears, prompting you to save the file to the location you choose.

For Windows computers, a dialog box appears, offering you the choice of running the program across the Internet or intranet or saving it to disk.

For Mac OS computers, a folder named Printer Driver is downloaded to the desktop in a BinHex-encoded, compressed format. If your Internet browser is equipped with an expander utility, such as StuffIt Expander, the folder decodes and decompresses automatically.

7. For Windows computers, browse to the location where you want to save the Prntdrv.exe file and click Save.

For Mac OS computers, if the Printer Driver folder did not automatically decode and decompress, start the utility that performs that function.

8. For Windows computers, double-click the Prntdrv.exe file, browse to the location where you want to install the folder, and click Next.

The folder is installed to the location you specified.

9. Install the appropriate printer driver for your operating system.

For instructions on installing the printer driver for	See
Windows 98/Me	“To install the PostScript or PCL printer driver for Windows 98/Me” on page 1-2
Windows NT 4.0/2000/XP/Server 2003	“To install the PostScript or PCL printer driver for Windows NT 4.0” on page 1-13
Windows 2000/XP	“To install the PostScript or PCL printer driver for Windows 2000/XP/Server 2003” on page 1-29
Mac OS 9	“To install the AdobePS printer driver and printer description file for Mac OS 9.x” on page 2-2
Mac OS X	“To install the printer description files for Mac OS X” on page 2-4

Problems with the Fiery utilities on Windows computers

If you are experiencing problems with connections for the Fiery utilities, try the following:

1. **Make sure the TCP/IP networking protocol is enabled.**
2. **Make sure the connection is configured correctly for your site.**

To check the current configuration, start a Fiery utility and choose Open from the File menu. Select the E-750 and click Modify to see current settings. If the settings are incorrect, you can change them in this dialog box.

On a Mac OS computer

Setting up the E-750 in the Mac OS 9 Chooser

If Auto-setup does not work and you are prompted to select the printer description file, select the appropriate E-750 file in your System:Extensions:Printer Descriptions folder, “E-750 US PS” or “E-750 EU PS”.

Installing screen fonts

If you experience problems installing the PostScript screen fonts from the User Software CD to the System folder:Fonts folder, try the following:

1. **Quit all applications and close all windows.**
2. **Create a new folder and name it “Uninstalled Fonts.”**
This folder must be located outside of the System folder.
3. **Move fonts you are not using from the System folder:Fonts folder to the Uninstalled Fonts folder.**

4. **Install the fonts from the User Software CD to a folder called CD fonts. Copy the fonts to the System folder:Fonts folder.**
5. **Create aliases to the System folder:Fonts folder and the Uninstalled Fonts folder.**
6. **Place both aliases on your desktop.**
7. **When necessary, use the aliases to open both folders and move fonts between them.**

If you have any applications running, you must quit and restart them in order to view and use the newly installed fonts.

Or, you can try combining fonts from multiple suitcases into a single suitcase.

Setting up the E-750 in the Mac OS X Print Center

If Auto-setup does not work and you are prompted to select the printer description file, select the appropriate E-750 file in your hard disk drive: System :Library:

Printers:PPDs:Contents: Resources:language folder (for example, en.lproj) folder, “E-750 US PS” or “E-750 EU PS”.

Index

A

- Adobe Acrobat
 - for DocBuilder Pro 1-54
 - installation 1-54
- Adobe PageMaker for Windows, *see* PageMaker for Windows
- Adobe PostScript 3 fonts xii
- Adobe PostScript printer driver, *see* PostScript printer driver
- AppleTalk
 - connecting to Mac OS 2-2, 2-5

C

- cable, color server xii
- Calibrat folder, for Windows users 1-64
- Calibration folder, for Macintosh users 2-21
- Chooser
 - selecting the server in 2-2, 2-5
 - setting up color server in 4-2
- Clrfiles folder 1-64
- CMYK Color Reference.ps 2-20
- Cmyk_ref.ps 1-64
- Color Files folder 2-21
- Color Files folder, for Macintosh users 2-20
- color management files xii, xiv
- color reference files xiv, 2-20
 - for Macintosh users 2-20
 - for Windows users 1-64
- color server, specifications xii
- ColorSync and ICM color management files xiv
- ColorSync Profiles 2-8
- ColorWise color management files xii
- ColorWise Pro Tools 1-53
 - configuring the connection to the Fiery (Mac OS) 2-10
 - (Windows) 1-56
 - installing for Mac OS 2-8

- installing for Windows 1-53

- Command WorkStation xi
 - configuring the connection 1-60
 - installing for Windows 1-53
- Command WorkStation LE
 - configuring the connection for Mac OS X 2-16
- Configuration page 1-11, 1-27, 1-44, 1-58
- connecting
 - Windows 2000/XP with TCP/IP 1-37
 - Windows NT 4.0 with TCP/IP 1-21
- connection on Windows, configuring 1-58 to 1-60
- Custom21.ps (Mac OS) 2-21
- Custom21.ps (Windows) 1-64
- Custom34.ps (Mac OS) 2-21
- Custom34.ps (Windows) 1-64

D

- device name 1-59, 2-11, 2-13
 - Windows 2000/XP with TCP/IP 1-22
 - Windows NT 4.0 with TCP/IP 1-22
- DNS name 1-22, 1-58, 2-13
- Domain Name Server, *see* DNS

E

- Efirgb.icc monitor settings file for Mac OS 2-22
- Efirgb.icm monitor settings file for Windows 1-65
- E-mail printing, installing 1-47, 1-53
- EPS files xiii
- Ethernet 100BaseTX cable xii
- Ethernet, SNAP frame type xii

F

- Fast Ethernet 100BaseTX cable xii
- Fast Ethernet 10BaseT cable xii
- Fiery Downloader 1-53

- EPS files xiii
- installing for Windows 1-53
- overview xiii
- PDF files xiii
- Fiery Printer Delete Utility 1-28, 1-56
 - installing on Windows 1-53
- Fiery Spooler xiv
 - configuring the connection on
 - Mac OS 2-12 to 2-14
 - modifying the configuration
 - (Mac OS) 2-14
 - overview xiv
- Fiery utilities
 - configuring the connection on
 - Windows 1-58 to 1-60
 - installing for Mac OS 2-8
 - installing for Windows 1-53
 - problems on Windows 4-2
- Fiery WebTools
 - Installer xv, xvi, 3-2 to 3-3
 - setting up 3-1
 - Status xvi
 - WebDownloader xvi
 - WebLink xvi
 - WebScan xvi
 - WebSetup xvi
- fonts
 - Adobe PostScript 3 xii
 - installer for Mac OS 2-19
 - installing 2-19, 4-2
 - Multiple Master xii
 - printer fonts 2-19 to 2-20
 - screen fonts 2-19 to 2-20
 - substituting in PDF files xii
- Fonts folder 4-3
- Frame Type option 1-8

I

- ICC device profile 2-24
 - loading in Photoshop 4.0
 - (Mac OS) 2-24

- loading in Photoshop 6.x (Mac
 - OS) 2-24
- ICC monitor settings profile, specifying in
 - Photoshop (Mac OS) 2-23
- ICM and ColorSync color management
 - files xiv
- Icm folder (Windows) 1-64
- Installable Options
 - specifying, from Mac OS 9x printer
 - driver 2-3
 - specifying, from Windows 2000/XP
 - printer driver 1-32
 - specifying, from Windows 98/Me printer
 - driver 1-4
 - specifying, from Windows NT 4.0
 - printer driver 1-16
 - specifying, from Windows NT printer
 - driver 1-16
- Installer WebTool, *see* Fiery WebTools
- installers
 - Mac OS 2-8
 - Windows 1-53
- installing
 - Adobe Acrobat 1-54
 - Adobe PostScript printer,
 - Windows 2000/XP 1-29 to 1-34
 - Adobe PostScript printer, Windows 98/
 - Me 1-2
 - Adobe PostScript printer,
 - Windows NT 4.0 1-13 to 1-16
 - Command WorkStation 1-53
 - Mac OS software 2-8
 - PCL printer driver, Windows 98/
 - Me 1-1 to 1-3
 - PostScript printer driver for Mac OS 2-2
 - screen and printer fonts 2-19 to 2-20
 - software for Mac OS 2-8
 - software for Windows 1-53
- internal name, for Windows NT 4.0 with
 - TCP/IP 1-22
- IP address 1-59

- IPP printing setup
 - on Windows 2000/XP 1-45 to 1-46
 - on Windows 98 1-12 to 1-13
 - on Windows Me 1-12 to 1-13
- IPX
 - printing for Windows 2000/XP 1-42 to 1-43
 - printing for Windows NT 4.0 1-25
 - Windows 2000/XP 1-42
 - Windows NT 4.0 1-24
- IPX/SPX
 - Windows 2000/XP 1-42
 - Windows NT 1-24

J

- Java 1-53, 3-1

M

- Mac OS X
 - setting up server in 4-3
- Mac OS9
 - printer setup 2-2
- Mac OSX
 - printer setup 2-4
- Mac OS
 - copying color files 2-20
 - fonts 2-19 to 2-20
 - Installer WebTool 2-1
 - installing Fiery utilities 2-1, 2-8
 - installing software 2-8
 - troubleshooting 4-2
 - monitor settings file, Mac OS 2-23

N

- NetWare client setup
 - Windows 98/Me 1-9, 1-24, 1-42
 - Windows 2000/XP 1-42
 - Windows NT 1-24

O

- Oemsetup.inf file 1-2, 1-14, 1-30

P

- PageMaker for Windows 1-69
- PANTONE Book.ps 2-20
- PANTONE.ps 1-64
- PCL printer driver
 - Windows 98/Me 1-1 to 1-3
- PDF files xii, xiii
- Photoshop 5.0
 - loading the ICC device settings profile (Mac OS) 2-24
 - loading the ICC monitor settings file (Mac OS) 2-23
 - loading the ICM device profile (Windows) 1-67
 - loading the RGB working space profile (Windows) 1-66
- Photoshop 6.x
 - loading the ICC device settings profile (Mac OS) 2-24
 - loading the ICC monitor settings file (Mac OS) 2-24
 - loading the ICM device profile (Windows) 1-68
 - loading the ICM monitor settings file (Windows) 1-68
- PostScript
 - printing from Mac OS 2-1 to 2-20
 - printing from Windows 1-1, 1-28
 - screen fonts xiii
- PostScript Printer Description file, *see* PPD
- PostScript printer driver
 - for Mac OS 2-2
 - installing using WebTools 3-2 to 3-3
 - Windows 2000/XP 1-29 to 1-34
 - Windows 98/Me
 - PostScript printer driver 1-2
 - Windows NT 4.0 1-13 to 1-16
- PostScript printing
 - Windows 98/Me 1-1
- PowerPoint, RGB color reference file 2-20
- PPD

- copying files for Windows applications 1-69
 - overview xiii
 - selecting the PPD in the Chooser 4-2
 - selecting the PPD in the Print Center 4-3
 - Windows 98/Me 1-3
 - Windows 2000/XP 1-30
 - Windows NT 4.0 1-14
- Print Center
 - setting up server in Mac OS X 4-3
- Printer Driver, installable options
 - Windows 2000/XP 1-32
 - Windows 98/Me 1-4
 - Windows NT 4.0 1-16
- printer drivers
 - deleting 1-56
- printer drivers, *see* PostScript printer drivers
- Printer Info Options
 - specifying, from Mac OSX printer driver 2-7
- printer setup
 - Mac OS9 2-2
 - Mac OSX 2-4
- printing
 - Windows 2000/XP 1-37
 - Windows NT 4.0 1-21
 - see also* PostScript printing
- Pntrdrv.exe file 3-3

R

- RGB page 01 2-20
- RGB page 02 2-20
- Rgb_01.doc 1-64
- Rgb_02.ppt 1-64

S

- screen fonts 2-19, 4-2
- SMB printing setup
 - on Windows 2000/XP 1-44 to ??
 - on Windows 98/Me 1-10 to 1-12
 - on Windows NT 4.0 1-26 to 1-28

- specifications, color server xii
- Spooler, *see* Fiery Spooler
- Stand21.ps (Mac OS) 2-21
- Stand21.ps (Windows) 1-64
- Stand34.ps (Mac OS) 2-21
- Stand34.ps (Windows) 1-64
- Status WebTool, *see* Fiery WebTools

T

- thinnet cable xii
- troubleshooting
 - Mac OS computers 4-2
 - Windows computers 4-1

U

- Uninstalled Fonts folder 4-2
- unshielded twisted pair (UTP) cable xii
- User Software CD
 - contents (Mac OS) 2-1
 - contents (Windows) 1-53
 - installing from, for Mac OS 2-2, 2-20
 - troubleshooting fonts 4-2

W

- WebDownloader WebTool, *see* Fiery WebTools
- WebScan xvi
- WebSetup WebTool, *see* Fiery WebTools
- Windows
 - copying color files 1-64
 - installing Fiery utilities 1-53
 - troubleshooting 4-1
- Windows 98/Me
 - PCL printer driver 1-1 to 1-3
 - setting up PostScript printing 1-1
 - SMB printing 1-10 to 1-12
 - troubleshooting 4-1
- Windows 2000/XP
 - IPX 1-42 to 1-43
 - IPX/SPX 1-42
 - PostScript printer driver 1-29 to 1-34
 - printing requirements 1-37

- setting up PostScript printing 1-28
 - troubleshooting 4-1
- Windows NT 4.0
 - IPX 1-25
 - IPX/SPX 1-24
 - PostScript printer driver 1-13 to 1-16
 - printing requirements 1-21
 - troubleshooting 4-1
- WINS Name Server 1-11, 1-27, 1-44
- Word, RGB color reference file 2-20

